

Service Info No. 109/21 LG control handle with spring

Subject : Landing gear control handle with spring

Effectivity : DG-100, DG-200, DG-400, DG-600M, DG-800 A +B up to ser.No. 8-130
Note: This retrofit is approved for DG-300 with TN359/22.
Note: From DG-800B ser.No. 8-131 on the spring is standard.

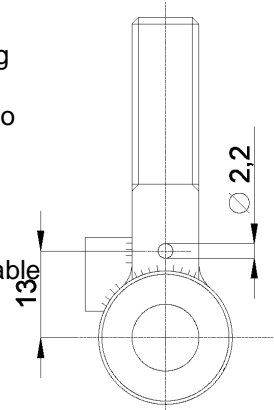
Accomplishment : up to ser.no. 3E506: none, optional
from ser.no. 3E507 on: during production

Reason : To facilitate the locking of the landing gear in extended position a torsion spring which rotates the handle into the lock will be installed instead of the friction disc.

Instructions :

1. Remove the handle FW9b/1 from the pushrod FW9b/2. Install part 8FW30/1 according to drawing 8FW30 to FW9b/2.
2. Drill a 2,2mm hole into handle FW9b/1 according to sketch.
3. Install the system according to drawing 8FW25.
4. The adjustment of the friction of the handle as described in MM section 1.7.2 DG-400 resp. 1.6.2 DG-600M resp. 1.6.1.2 DG-800 is no more applicable and may be crossed out.

Note: Not described in MM DG-100 + DG-200. Both versions described in MM DG-800B.



Material : Additionally for retrofit:
Drawings:
8FW25
8FW30
1 bush 8FW9/4
1 ring 8FW9/5
1 bush 8FW30/1
1 spring 8FW10
1 notched taper pin 3x20DIN1471
Loctite 638

Bruchsal
November 2021

Author: Wilhelm Dirks