

- Subject : Installation of the emergency bail out aid NOAH
- Effectivity : LS8-a, LS8-t all Ser. No's, all models
- Accomplishment : None, optional
- Reason : NOAH is a system to facilitate the bail out of the cockpit in an emergency. NOAH is a supplementation to the parachute.
- Instructions :
 1. Installation of the NOAH system according to the working instruction "NOAH Retrofit for LS8"
 2. For Ser. No's 8007 and higher: Modification of the water ballast release lever according to working Instructions "Conversion of water ballast lever for NOAH LS8"
 3. Enter the NOAH airbag, the high pressure hose (life time 10 years) and the pressurised gas cylinder (TBO 10 years) into the record of life limited components of your glider.
 4. File the "manual for the emergency bail out aid NOAH" into your aircraft logs
 5. Periodical inspection and maintenance must be executed according to the instructions in the "manual for the emergency bail out aid NOAH". Enter mass, date and inspection signature into the placard on the pressure gas cylinder and in the manual after its inspection.
- Material :
 1. See parts list NOAH-LS8
 2. Manual for the emergency bail out aid NOAH
 3. Drawings Z134, Z137, Z145, Z146, Z147, Z150
 4. Working Instruction "NOAH Retrofit for LS8"
 5. Working Instructions "Conversion of water ballast lever for NOAH Ls8"
- Weight and balance : Balance: Weight and Balance have to be re-determined
- Remarks :
 1. Instructions No. 1+2 and 5 are to be executed by the manufacturer or by a licensed workshop and to be inspected and entered in the aircraft logs by a licensed inspector.

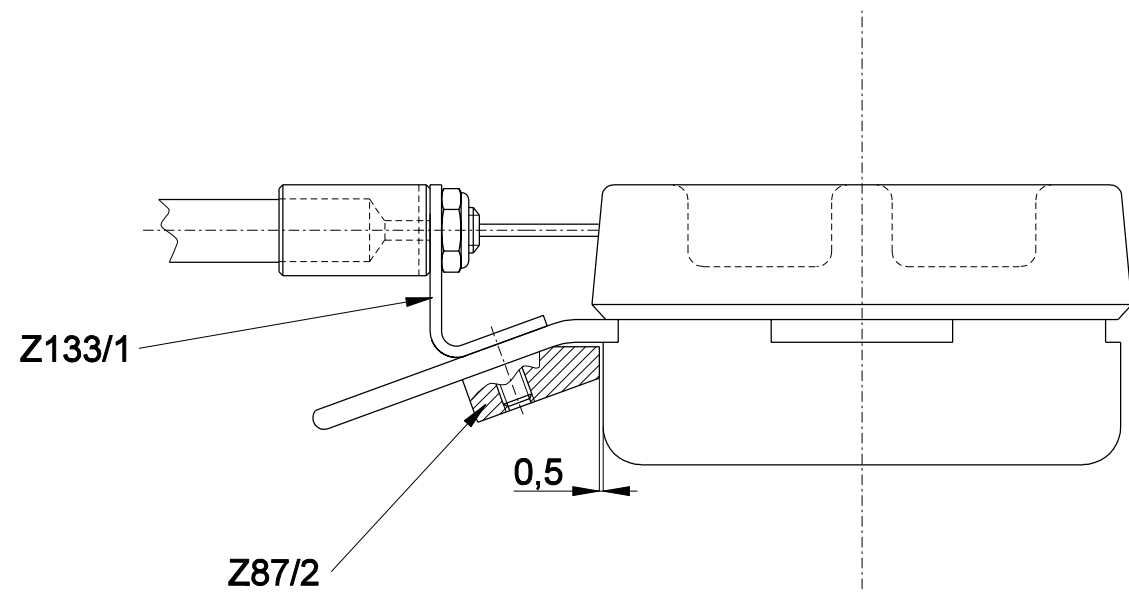
Bruchsal, date: 24.07.07

Author:
R. van der Bos B.Eng.

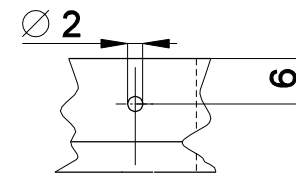
EASA approved on 5. December 2007
under Approval No. EASA.AC.07888



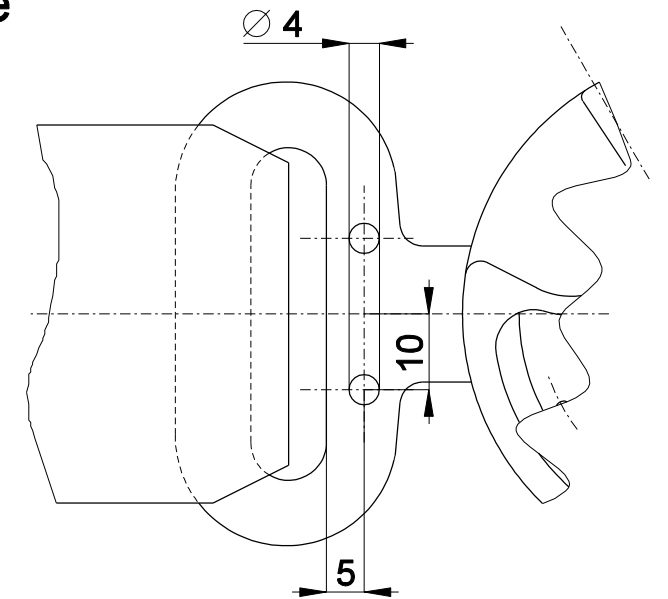
Vorbereitung des Gurtschlosses Preparation of the safety belt buckle



Ansicht/Section A
(Nur Gurtschlossdetail dargestellt)
(detail only)

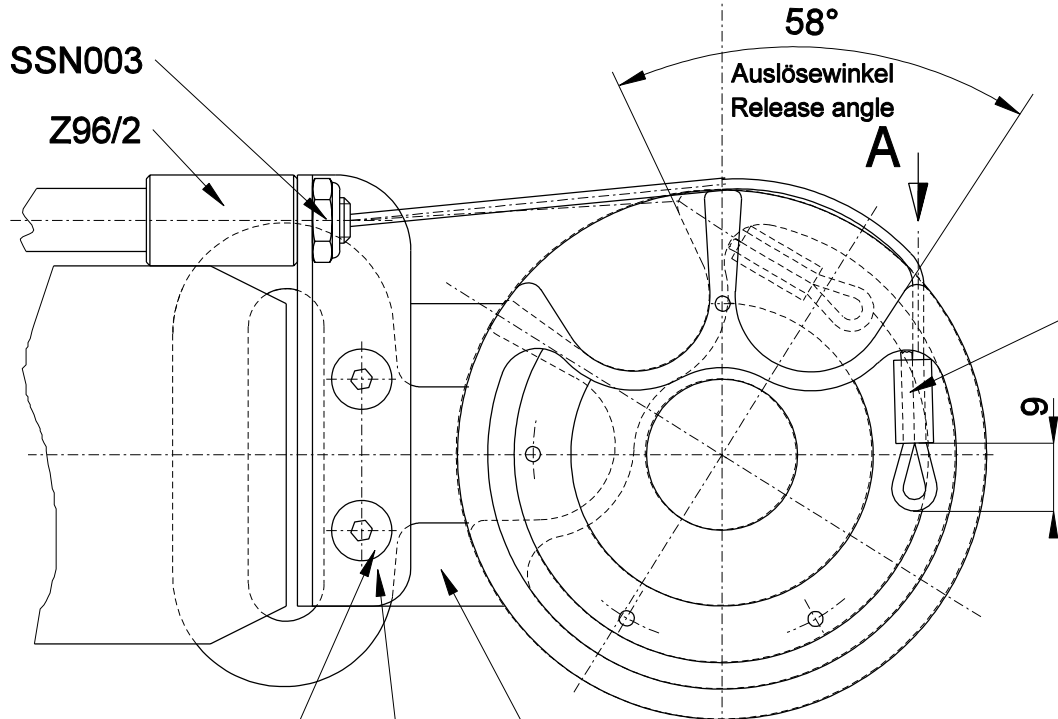


Diese Bohrung zur
der Montage des
Seilzugs anbringen



Mutter/Nut M6 SSN003

Z96/2



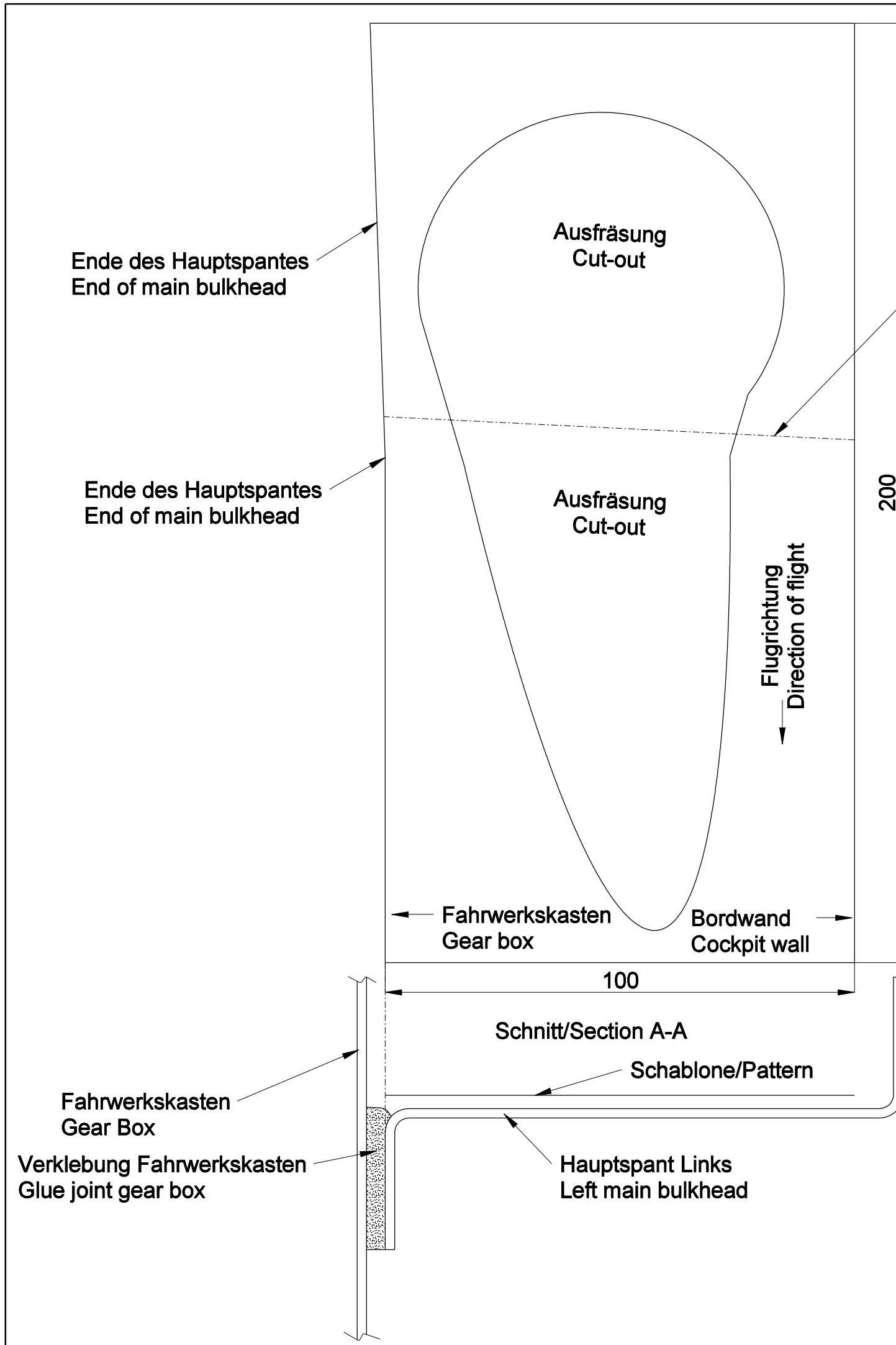
Nicopressklemme 28-1-C
Nicopress clamp 28-1-C

Z133/1

Z87/2

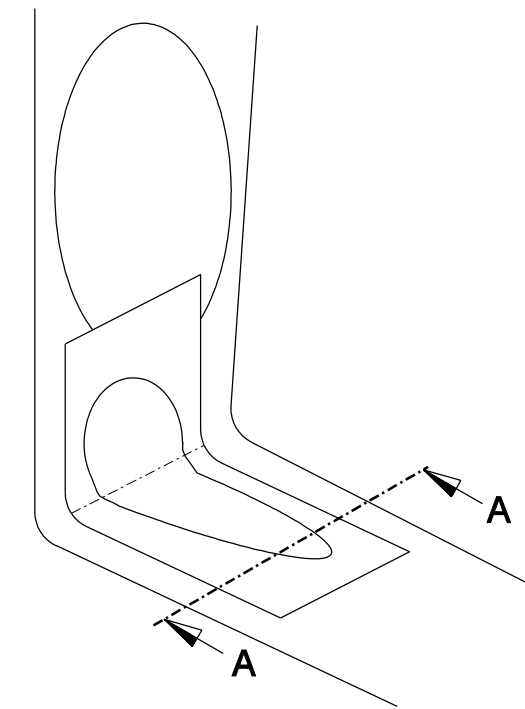
Schraube/Bolt M4x10 DIN 7991- 8.8 zn
gesichert mit/secured with Loctite 243


Toleranzen nach Arbeitsanweisung BA 1					Tag	Name	DG Flugzeugbau GmbH 76646 Bruchsal 4 Im Schollengarten 20
Schweißen nach Arbeitsanweisung SA 1					Gez.	25.07.07 S. Lehner	
					Gepr.		
					Norm.		NOAH-LS Gurtschloß (SCHROTH) Montage/Assembly
					Maßstab	1:1	
					Maße ohne Toleranzang. nach:		
Ausg.	Änderung	ÄM	Tag	Name			DG Z134

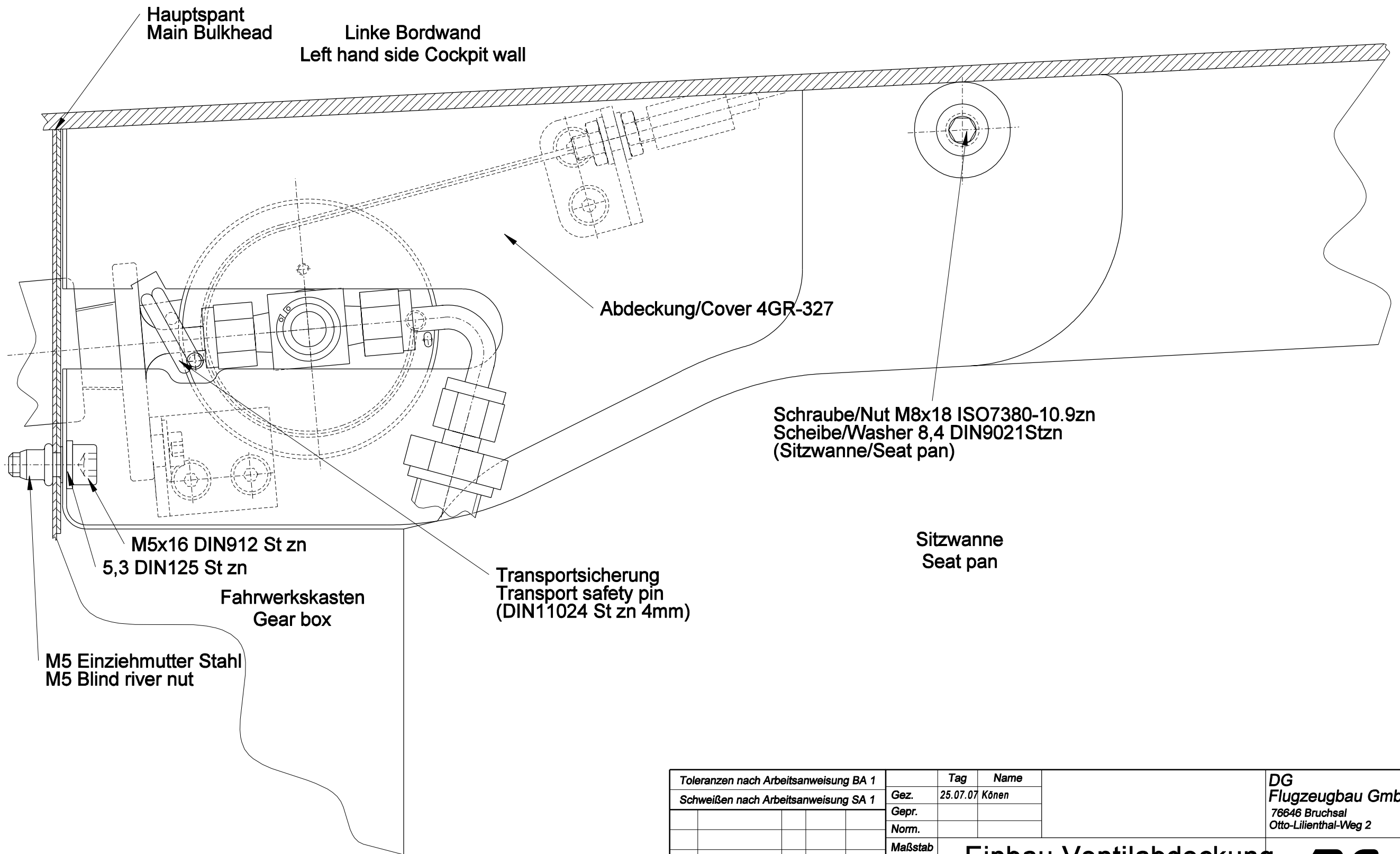


Kante im Hauptspant View from the right hand side backwards
Edge in main bulkhead

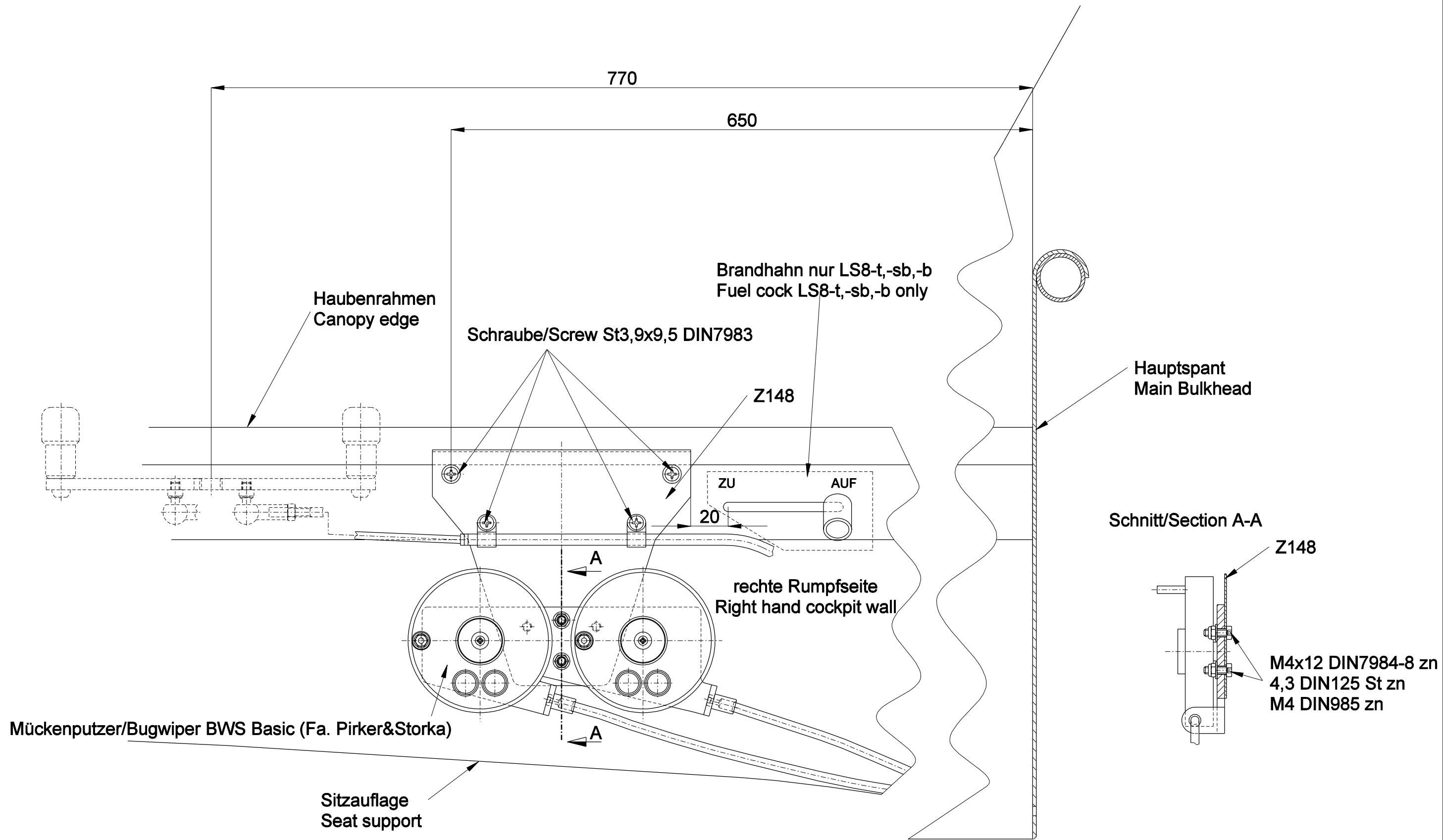
Ansicht von rechts vorne,
View from the right hand side backwards
Fahrwerkskasten nicht dargestellt
Gear box not shown



Toleranzen nach Arbeitsanweisung BA 1					Tag	Name	DG Flugzeugbau GmbH 76646 Bruchsal Otto-Lilienthal-Weg 2
Schweißen nach Arbeitsanweisung SA 1					Gez.	03.07.07 R. v.d. Bos	
					Gepr.		
					Norm.		Schablone für Ausfräsung Hauptspant NOAH Ls8
					Maßstab		
					:		
					:		
					Maße ohne Toleranz- ang. nach:		
Ausg.	Änderung	ÄM	Tag	Name			 Z137



Toleranzen nach Arbeitsanweisung BA 1					Tag	Name	DG Flugzeugbau GmbH 76646 Bruchsal Otto-Lilienthal-Weg 2
Schweißen nach Arbeitsanweisung SA 1					Gez.	25.07.07 Könen	
					Gepr.		
					Norm.		DG Einbau Ventilabdeckung Valve cover assembly Z146
					Maßstab	1:1	
						:	
					Maße ohne Toleranzang. nach:		
Ausg.	Änderung	ÄM	Tag	Name			



Toleranzen nach Arbeitsanweisung BA 1				
Schweißen nach Arbeitsanweisung SA 1				
...
...
...
...
...
...
...
Ausg.	Änderung	ÄM	Tag	Name

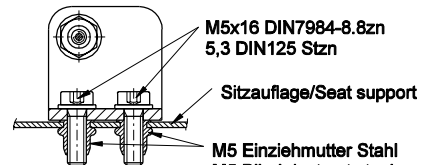
Tag	Name
Gez. 06.09.06 Könen
Gepr.
Norm.
Maßstab	1:2
Maße ohne Toleranzang. nach:

**Einbau Mückenputzer
Bugwiper installation
Ls8**

DG
Flugzeugbau GmbH
76646 Bruchsal
Otto-Lilienthal-Weg 2

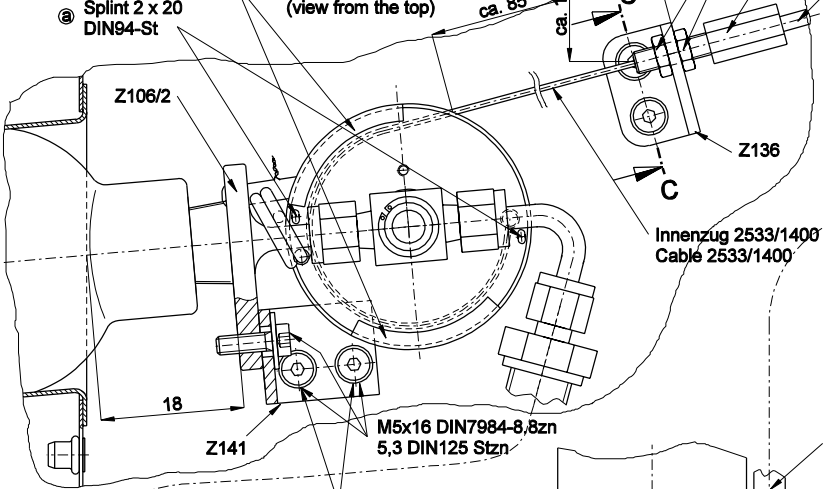
Z147

Section/Schnitt C-C

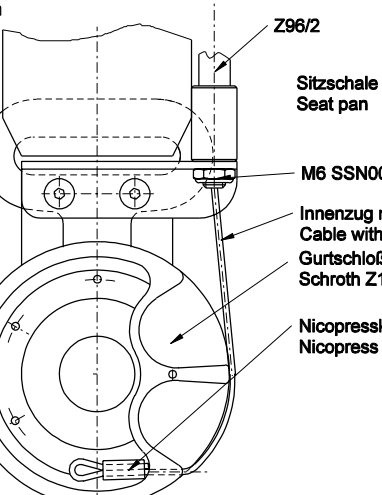
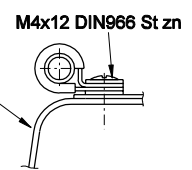


Spalt 2 mal abkleben mit Aluminiumklebeband 50x25 mm
Close opening with two strips aluminiumtape 50x25mm

Ansicht von oben (view from the top)

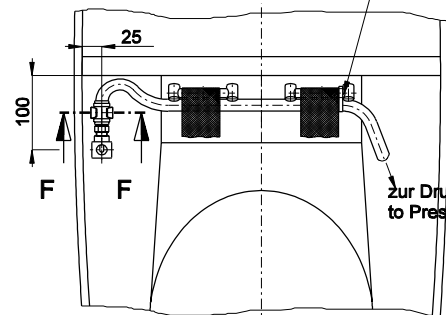
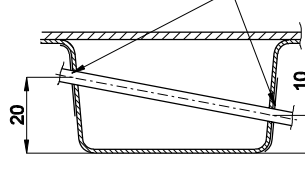


Section/Schnitt B-B



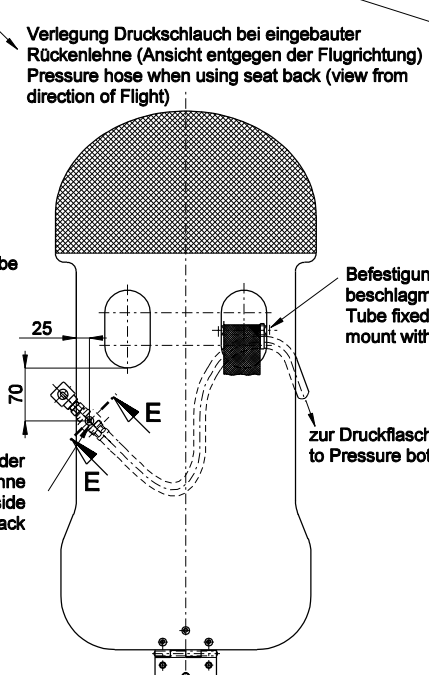
M4x12 DIN966 St zn

Section/Schnitt A-A



Verlegung des Druckschlauchs ohne Rückenlehne (Ansicht von oben)
Pressure Hose when seat back not installed (view from top)

Verlegung des Druckschlauchs bei eingebauter Rückenlehne (Ansicht entgegen der Flugrichtung)
Pressure hose when using seat back (view from direction of Flight)



Befestigung am Gurtaufhängebeschlag mit Tyrap 4,8mm
Tube fixed to belt Safety Harness mount with Tyrap 4,8mm

zur Druckflasche
to Pressure bottle

Befestigung am Gurtaufhängebeschlag mit Tyrap 4,8mm
Tube fixed to belt Safety Harness mount with Tyrap 4,8mm

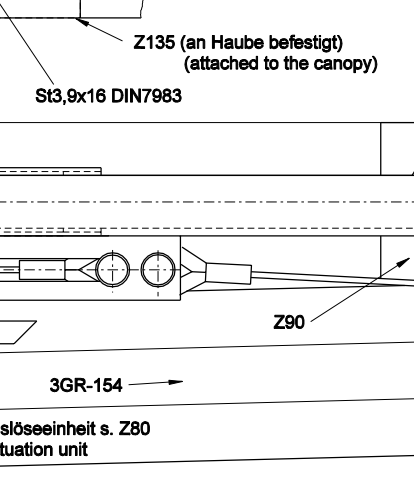
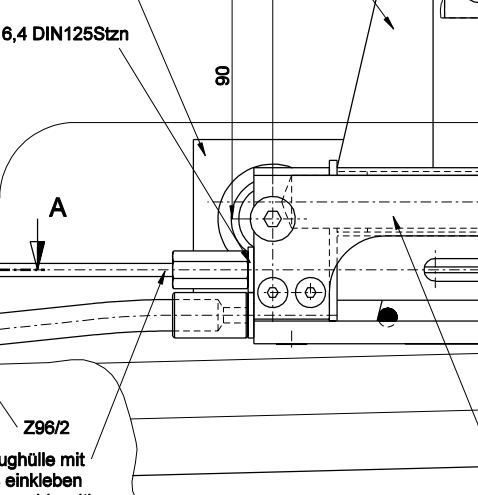
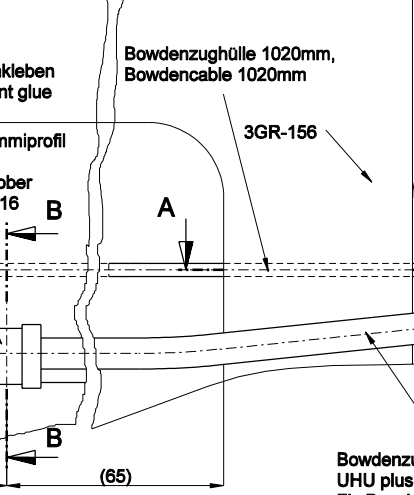
zur Druckflasche
to Pressure bottle

Befestigung Polymidrohr 3 x 92125 diag., 50x80mm
Fixing of the Polamid tube 3 x 92125 diag., 50x80mm

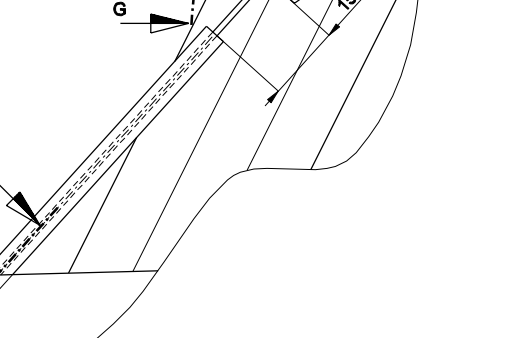
Lochverstärkung 2 x 92125 diag. Ø40mm
Reinforcement 2 x 92125 diag. Ø40mm

Rechte Cockpitseite (right hand side of the cockpit)

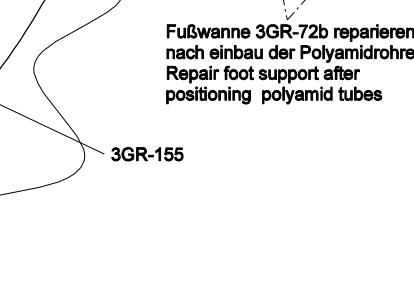
Linke Cockpitseite (Left hand side of the cockpit)



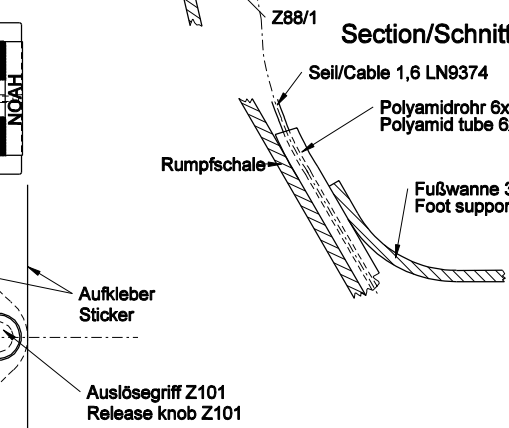
Section/Schnitt G-G



Fußwanne 3GR-72b reparieren nach einbau der Polyamidrohre
Repair foot support after positioning polyamid tubes



Section/Schnitt D-D



Angebrachte Aufkleber
Applied sticker

Nicopressklemme 28-1-C
Nicopress clamp 28-1-C

Schrumpfschlauch Länge 20 mm

Seil/Cable 1,6 LN9374
Polymidrohr 6x1
Polyamid tube 6x1

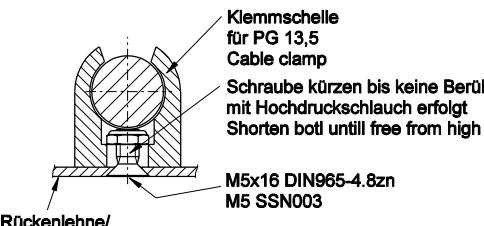
Seil/Cable 1,6 LN9374
Polymidrohr 6x1
Polyamid tube 6x1

Auslösegriff Z101
Release knob Z101

Lochverstärkung 2 x 92125 diag. Ø40mm
Reinforcement 2 x 92125 diag. Ø40mm

Befestigung Polymidrohr 3 x 92125 diag., 50x80mm
Fixing of the Polamid tube 3 x 92125 diag., 50x80mm

Section/Schnitt E-E



Klemmschelle für PG 13,5
Cable clamp

Schraube kürzen bis keine Berührung mit Hochdruckschlauch erfolgt
Shorten bolt until free from high pressure tube

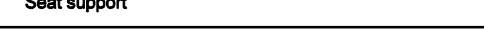
M5x16 DIN965-4.8zn
M5 SSN003

Rückenlehne/
Seat back

Befestigung auf der Rückseite der Rückenlehne
Clamp mounted on rear side of Seat back

Sitzschale
Seat pan

Section/Schnitt F-F



Klemmschelle für PG 13,5
Cable clamp

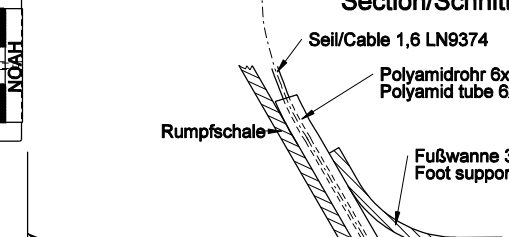
M5x20 DIN7984 St zn

7,4 DIN125 St zn

M5 Einziehmutter (in Sitzschale)
M5 Blind rivet nut (in seat pan)

Sitzschalenauflage
Seat support

Section/Schnitt E-E



Klemmschelle für PG 13,5
Cable clamp

Schraube kürzen bis keine Berührung mit Hochdruckschlauch erfolgt
Shorten bolt until free from high pressure tube

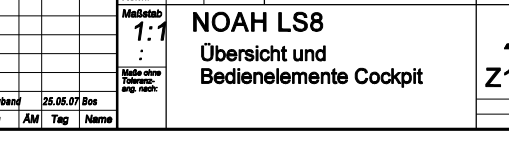
M5x16 DIN965-4.8zn
M5 SSN003

Rückenlehne/
Seat back

Befestigung auf der Rückseite der Rückenlehne
Clamp mounted on rear side of Seat back

Sitzschale
Seat pan

Section/Schnitt E-E



Klemmschelle für PG 13,5
Cable clamp

M5x20 DIN7984 St zn

7,4 DIN125 St zn

M5 Einziehmutter (in Sitzschale)
M5 Blind rivet nut (in seat pan)

Sitzschalenauflage
Seat support

Toleranzen nach Arbeitsanweisung BA 1	Gez:	23.10.06 R. v.d. Bos	DG
Schweißen nach Arbeitsanweisung SA 1	Gepr:		Flugzeugbau GmbH
	Norm:		78646 Bruchsal
	Maßstab:	1:1	Otto-Lilienthal-Weg 2
	Made ohne Fälschung nach:		DG
			Z150
NOAH LS8			
Übersicht und Bedienelemente Cockpit			