

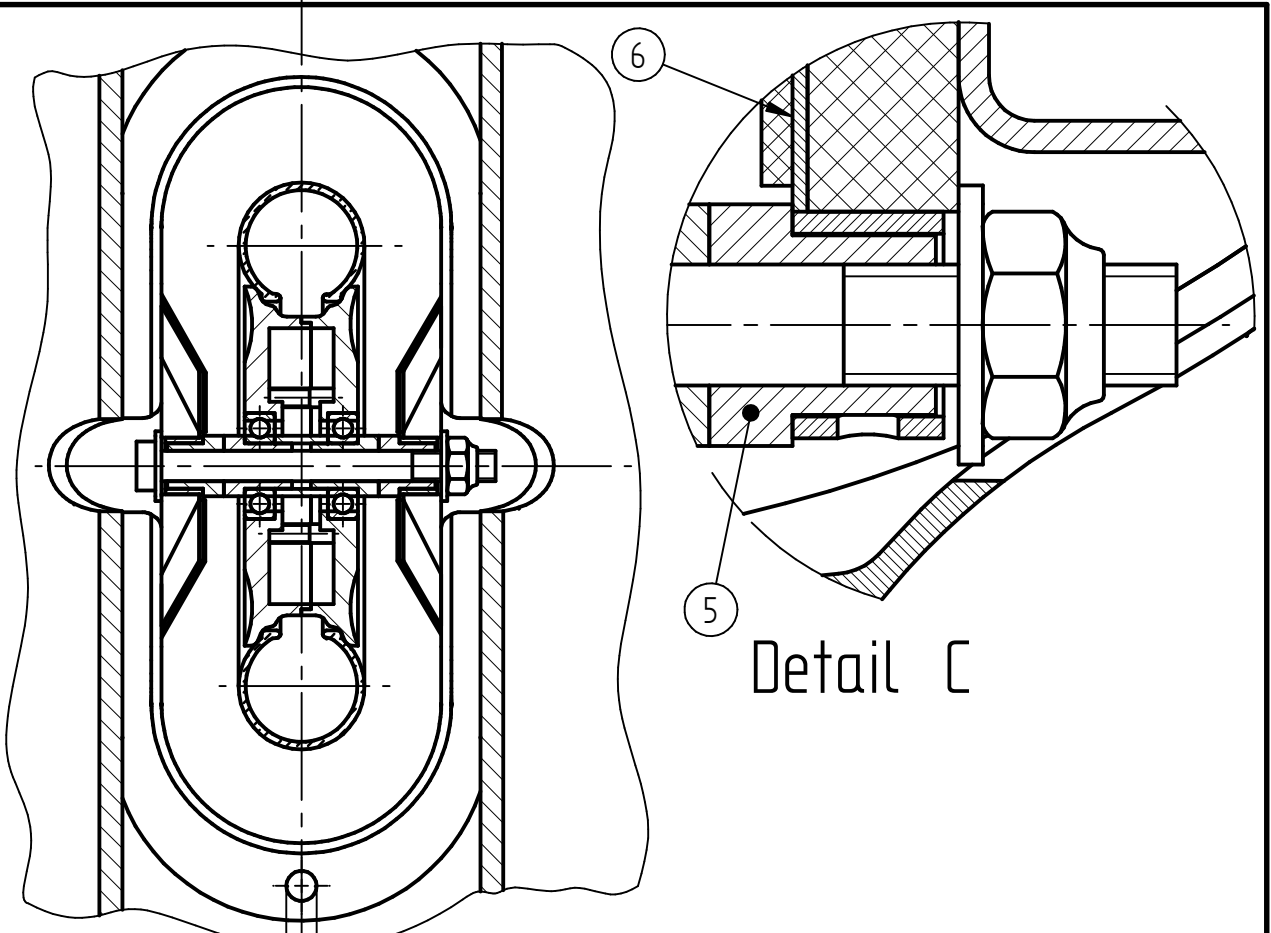
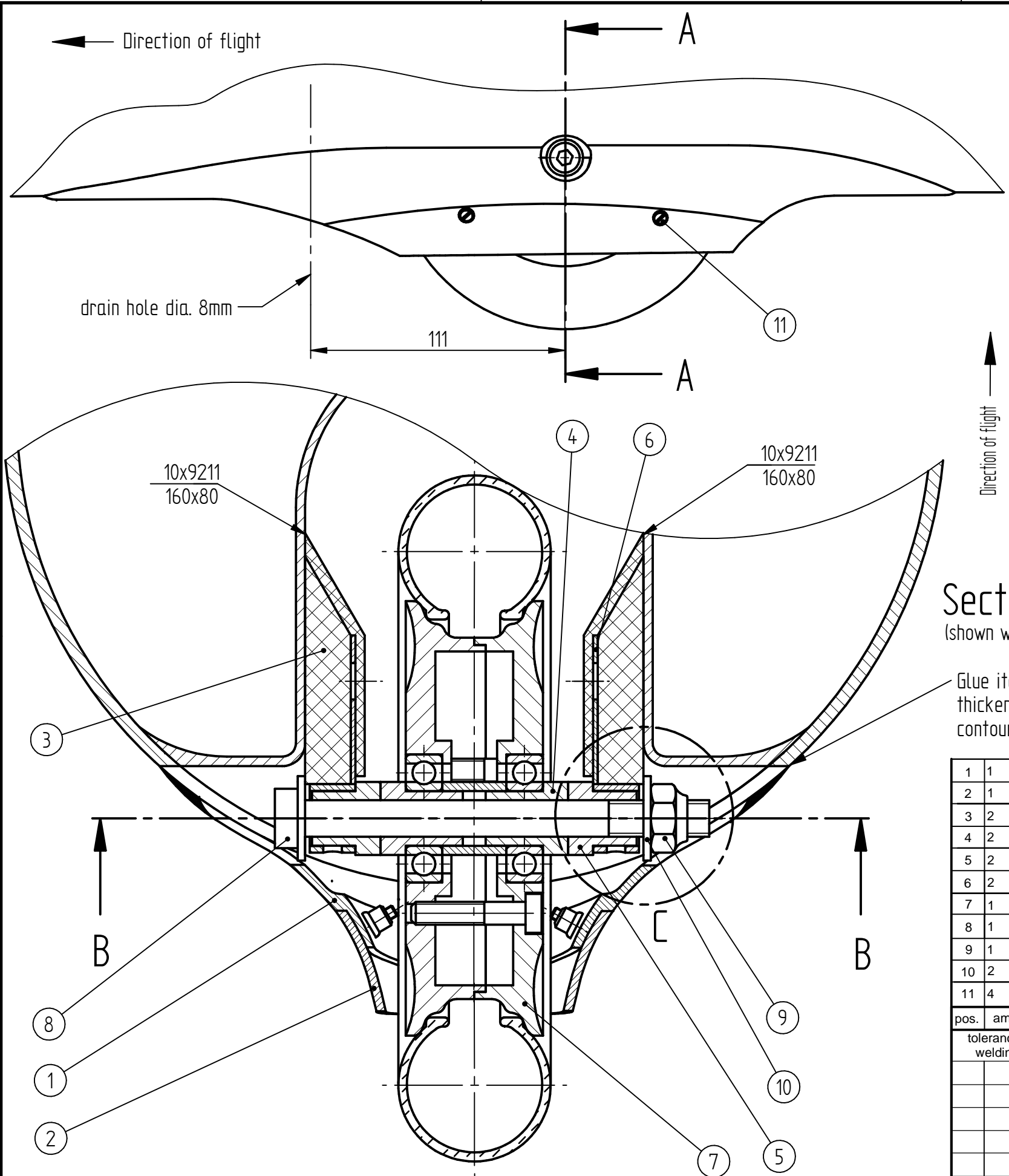
- Subject : Installation of a small tailwheel
- Effectivity : LS sailplanes all LS7 variants
LS8 all variants
- Accomplishment : None, optional retrofit
- Reason : Optionally a small tailwheel type Tost Mini 150 6PR may be installed instead of the tail skid or of the 210x65 tailwheel.
- Instructions : 1. Installation of a small tailwheel type Tost Mini 150 6PR according to working instruction No. 1 for TN8021 + TN7017 and drawing BR-263.
2. Exchange the following manual pages against new pages issued December 2014 marked with TN8021 resp. 7017. Respect the changes marked in the right hand margin.
- Flight manual LS7: 0-1, 0-2, 4-3
Flight manual LS7-WL: 0-1, 0-2, 4-3
Maintenance Manual LS7: 0-1, 0-3, 0-4, 7-2, 7-3
- Flight manuals LS8, LS8-a, LS8-b, LS8-18: 0-2, 0-3, 4-4
Flight manual LS8-s and LS8-sb: 0-1, 0-3, 0-5, 4-8, 7-6
Flight manual LS8-st (for variant LS8-t): 0.1, 0.4, 0.6, 4-15, 7-7
Maintenance Manual LS8 (-a, -b, -18): 0-1, 0-3, 0-5, 7-1 up to 7-4
Maintenance Manual LS8-s and LS8-sb: 0-1, 0-3, 0-6, 1-15, 8-1
Maintenance Manual LS8-st (for variant LS8-t): 0-1, 0-3, 0-7, 1-17, 8-1
- Material : Working instruction No. 1 for TN8021 + TN7017
Drawing BR-263
Retrofit kit Part. No. 45000825
Further material see list in working instruction No. 1 for TN8021 + TN7017
- Weight and balance : After executing the instruction described in this technical note execute a weight and balance determination and file a new weight and balance report.
- Remarks : 1. EASA countries: The actions have to be performed in a Part -145 approved organisation, or in a Part M, Subpart F approved organisation according to the regulations of the Part M and released according to M.A.801.
2. Non EASA countries: The actions have to be performed in a licensed workshop. All instructions are to be inspected and entered in the aircraft logs by a licensed inspector.

Bruchsal, date: 12.02.2015

Author: Modifications approved by EASA Date 24 February 2015
under Approval No. 10052403

Wilhelm Da...

Diese Zeichnung ist Eigentum der DG Flugzeugbau GmbH.
 Nicht ausdrücklich freigegebene Vervielfältigung oder Weitergabe an Dritte ist verboten.
 DG Flugzeugbau GmbH.



Section B-B
(shown without GR-328)

Glue item 1 to fuselage shell with resin/hardener thickened with cotton flocks, match to fuselage contour by grinding and filling with putty

Effected types
LS7
LS8

pos.	amount	drawing number	description	standard	supplier
1	1	GR-328	Fairing fix part (with nuts installed)		
2	1	GR-329	Fairing removable part (with holes)		
3	2	GR-330	GFRP spacer plates		
4	2	4R89/1	Bush		
5	2	R2-216	Bush		
6	2	R2-110b	Mounting plates for tail wheel axis		
7	1		Tail wheel Tost Mini 150		Tost
8	1		Tail wheel axis	M8x90 DIN7984-7.8 zn	
9	1		Self locking nut	M8 DIN 985-8 zn	
10	2		Washer	8,4 DIN125 St zn	
11	4		Bolts (to fix removable fairing)	M3x12 DIN963 4.8 zn	

tolerances according to work instruction BA 1		date	name		DG Flugzeugbau GmbH 76646 Bruchsal Otto-Lilienthal-Weg 2 Germany	
welding according to work instruction SA 1		design	20.11.14			Labs
		checked	21.01.15			W. Dirks
		approved				
		scale:	Title:			
		1:2	Small tail wheel			
		1:1	installation			
		unless otherwise noted dimensions are in mm				
Rev.	description	S/N	date	name		

Section A-A (1:1)