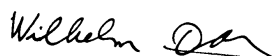


- Subject : Wingflap handle, manual revisions
- Effectivity Type: LS10
Variants: LS10-s, LS10-st
- Accomplishment : Instruction 1 a): Prior to next flight and at repeat at each annual inspection.
1 b), 1 c): Replace when worn.
Instructions 2: Up to April 31. 2012, but latest prior to the next annual inspection.
- Reason : 1. The Locking-plate welded to the wing flap handle 9St9 which acts as a detent for the notches in the wing flap guide plate 9St10 was worn quite quickly on some LS10, see photo on the next page.
To use an even harder material for this plate would be the wrong corrective measure, as then the notches in the wing flap guide plate (not removable) will wear out.
To fix the problem a plate made from brass will be bolted to the wing flap handle 9St9. This plate may be exchanged easily when worn (part 9St9/6).
2. Manual revision: Regular inspection and exchange of the plate 9St9/6, other changes due to operational experience, correction of errors.
- Instructions : 1. a) Check the locking plate at the wing flap handle 9St9 prior to the next flight and repeat the check at each annual inspection.
b) If already worn as shown on the picture on page 2 remove the wing flap handle and send it to DG Flugzeugbau for modification. Reinstall the modified item or a new part.
c) Check the locking plate 9St9/6 at each annual inspection and exchange if necessary.
When exchanging the locking plate 9St9/6 it must be fixed with 2 bolts M4x10 DIN933-8.8 BIC to 9St9 and the bolts must be secured with Loctite 243.
2. Exchange the following manual pages against new pages issued December 2011 marked with TN LS10-02. Consider the changes marked in the right hand margin.
Flight manual: 0.1, 0.3 ÷ 0.6, 2.4, 2.6, 3.4, 4.2, 4.3, 6.13, 6.14, 7.2, 7.33 ÷ 7.35
Maintenance manual: 0.1, 0.3 ÷ 0.7, 0.13, 1.5, 1.19, 1.36, 2.1, 4.1, 4.2, 4.17, 4.25, 6.2 ÷ 6.4, 7.1, 8.1, 9.3, 9.4, 9.6, diagrams 1, 3, 5, 12, 22, 23
Repair manual: 1, 2, 6, 7
- Material : When worn:
Wingflap handle according to drawing 9St9 change g new or modified
Locking plate (detent) 9St9/6
2 bolts M4x10 DIN933-8.8 BIC
Loctite 243
- Weight and balance : influence negligible
- Remarks : Instructions No. 1 a) and 1 c) and 2 may be executed by the pilot/owner himself and are to be inspected and entered in the aircraft logs by a licensed inspector at latest with the next annual inspection.

Instructions No. 1 b):
1. EASA countries: The actions have to be performed in a Part -145 approved organisation, or in a Part M, Subpart F approved organisation according to the regulations of the Part M and released according to M.A.801.
2. Non EASA countries: The actions have to be performed in a licensed workshop. All instructions are to be inspected and entered in the aircraft logs by a licensed inspector.

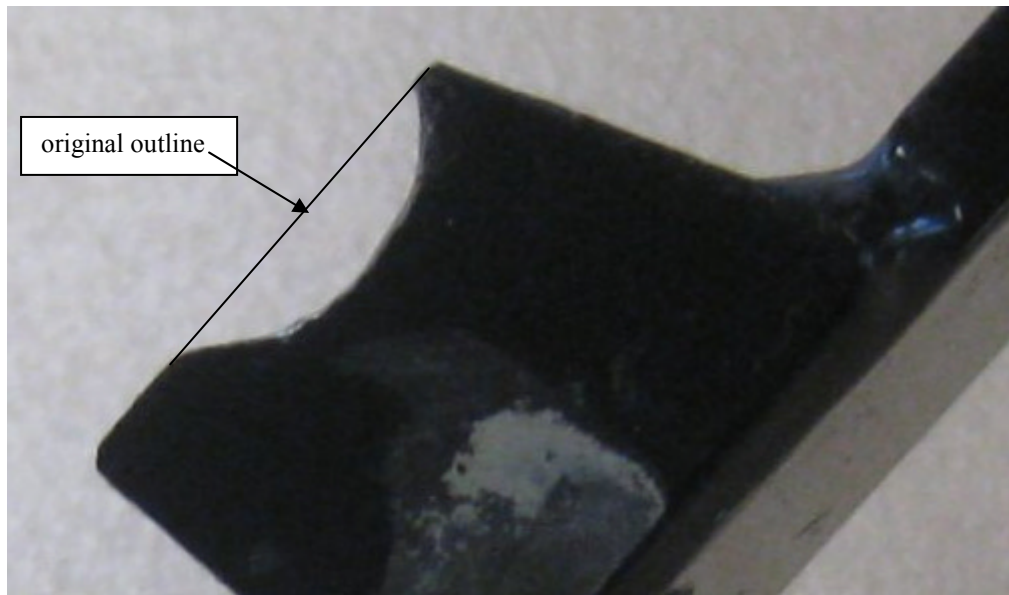
Bruchsal, date: 23.01.2012

Author: W. Dirks



Modifications approved by EASA Date February 17. 2012
under Approval No. 10038457

Locking plate at part 9St9



Note: Ship the wingflap handle with the riveted in rod-end to DG.

Prior to removal of the handle measure the distance between the front end of pushrod 9St19 (see MM diagram 3) and the axis of the rod-end in 9St9 and adjust to same distance when reassembling.

After reassembling check the wing flap zero adjustment according to MM section 1.4.2 and readjust at the rod-end if necessary.