

**Working instruction No. 5 for TN DG-G-09
DG-1000M**

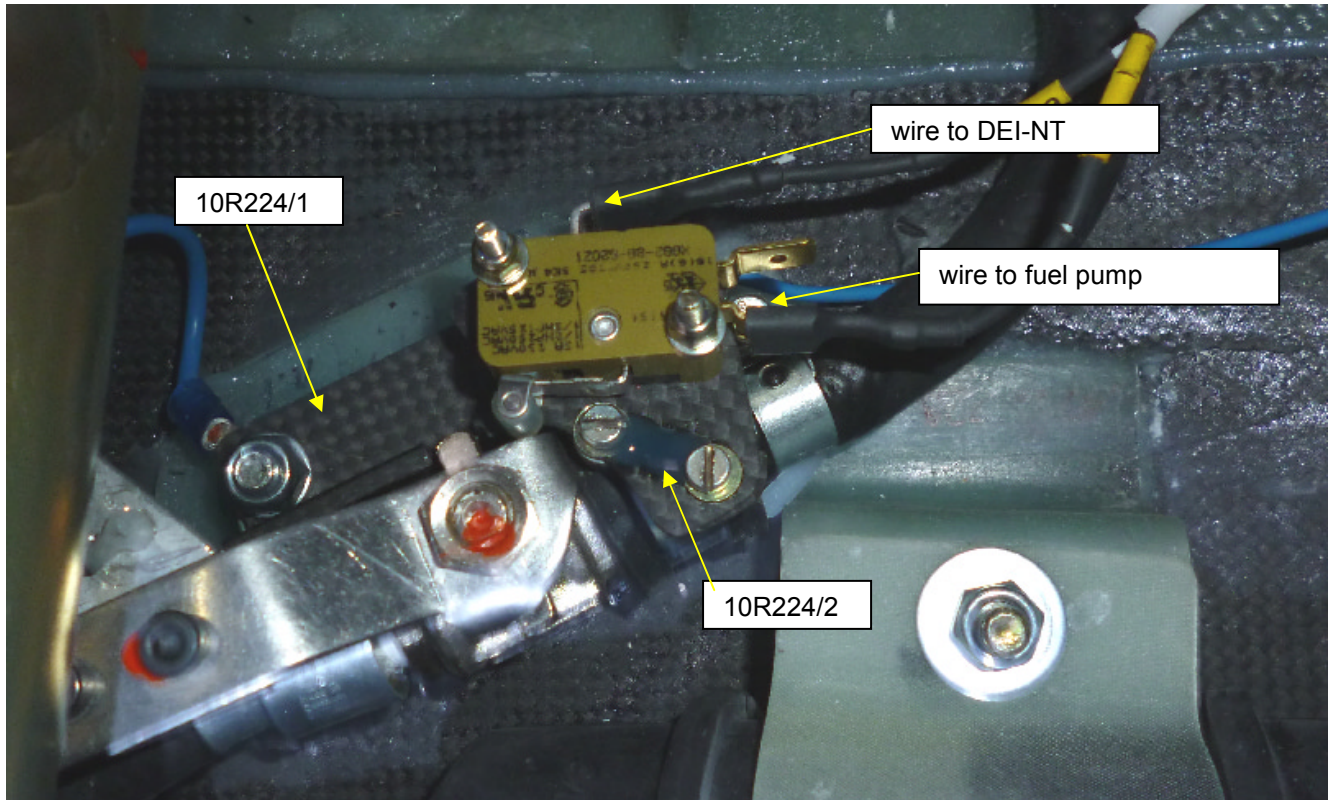
Installation of a fuel cock warning device in the DG-1000M

1. Remove baggage compartment floors and rear wall. Remove front instrument panel cover. Remove the screws holding the rear instrument panel to the cover and swing the instrument panel open (remove the upper part of the control stick first). Remove the screws holding the panel with the sockets for the radio system (in the rear main bulkhead at the upper right hand side), pull out the panel.
Remove the front DEI-NT and ship it to DG for modification (software version V15 or higher). Reinstall after modification.
2. Remove nuts and washers which fix the pipe clamps holding the fuel cock to the holder glued to the fuselage floor. Lift off earth wires which are fixed there.
3. Assemble holders 10R224/1 and /2 together with the switch (XGG2-88-S20Z1) according to drawing 10R224. Place this unit onto the mounting bolts, reinstall earth wires and washers, use new self-locking nuts M6 DIN985-8 zn to fix the unit.
4. Plug wire 10R224/3 (from switch to fuel pump) to the switch terminal (see drawing 10R224) and install the other end of the wire in addition to the other earth wires at the closest fuel pump.
5. Plug wire 10R224/4 (from switch to DEI-NT) to the switch terminal and route it along the existing wiring loom from the fuel pump upwards, then to the right hand side fuselage wall and from there to the front to the room behind the panel with the sockets for the radio system (in the rear main bulkhead at the upper right hand side).
Route the wire along the Bowdencable outers (for waterballast) up to the front main bulkhead. Slip the wire through the existing hole in the tubular part of the bulkhead and route it to the rear instrument panel. From there route the wire through one of the cable tubes to the front instrument panel (use a pull-through aid). Fix wire with cable ties to existing wires.
6. Pull off DEI plug from the DEI and open the plug. Slip the pin of the wire into position 3 of the plug body. Press the pin with a small screwdriver or similar into the body until it engages. Close the plug, insert and secure it to the DEI.
7. Check the function of the fuel cock warning device: With ignition “on“ a warning message must appear on the DEI-NT screen when the fuel cock is not fully open. As soon as you open the fuel cock fully or if you switch off the ignition, the warning message must disappear.
8. Re-install the parts see item 1.

Material list: DG part No. 39000184 Material for TN DG-G-09 fuel cock warning DG-1000M consisting of:

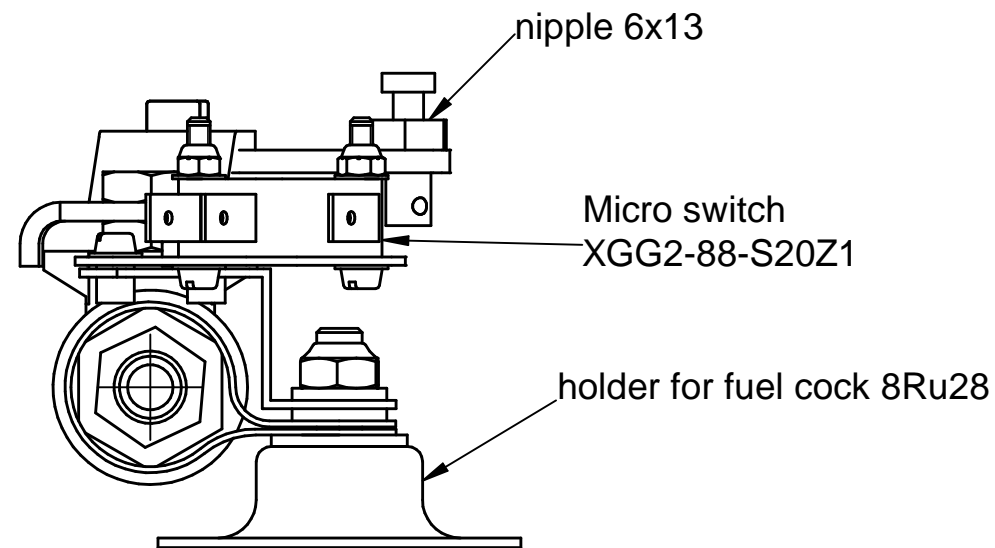
Quantity	Designation
1	drawing 10R224
1	holder part 1 10R224/1 with rivet nuts M3 installed (10R224/5)
1	holder part 2 10R224/2
1	micro switch XGG2-88-S20Z1
2	self-locking nut M6 DIN985-8 zn
2	screw M3x10 DIN84-8.8 zn
2	screw M3x20 DIN84-8.8 zn
2	self-locking nut M3 DIN985-8 zn
6	washer 3,2 DIN125 St zn
1	wire from switch to fuel pump 10R224/3
1	wire from switch to DEI-NT 10R224/4

**Working instruction No. 5 for TN DG-G-09
DG-1000M**

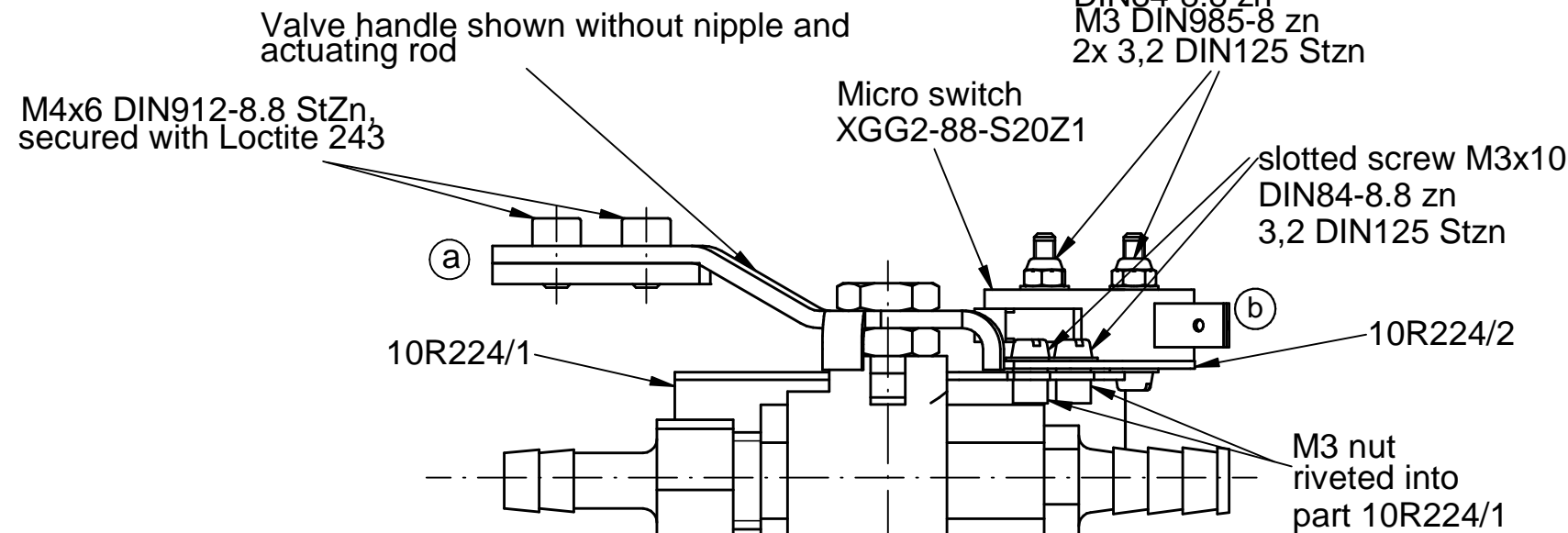


Installation fuel cock with switch for fuel cock warning DG-1000M

Diese Zeichnung ist Eigentum der DG Flugzeugbau GmbH. Nicht ausdrücklich freigegebene Vervielfältigung oder Weitergabe an Dritte ist verboten. DG Flugzeugbau GmbH.

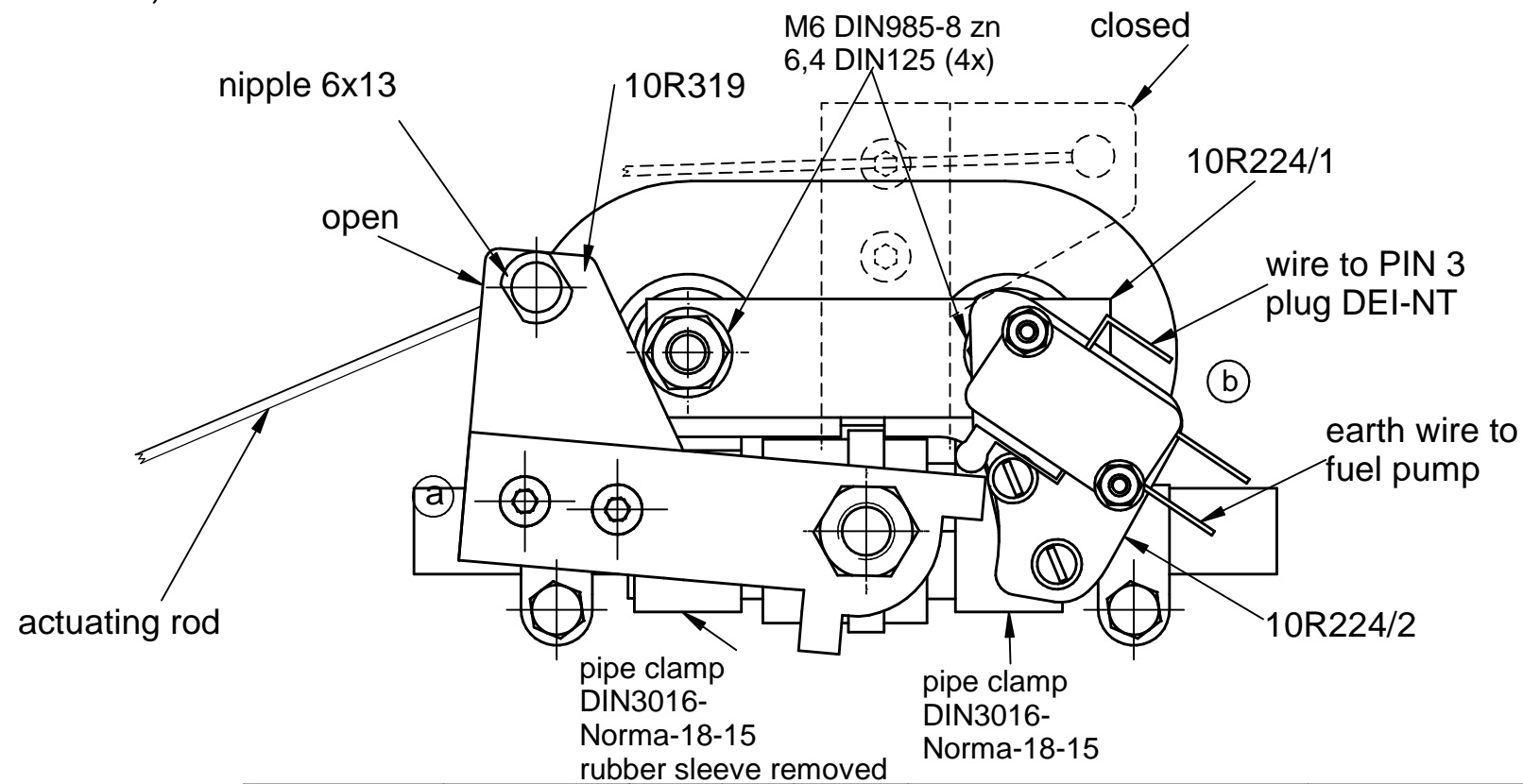


Fuel cock view without holder and hoses

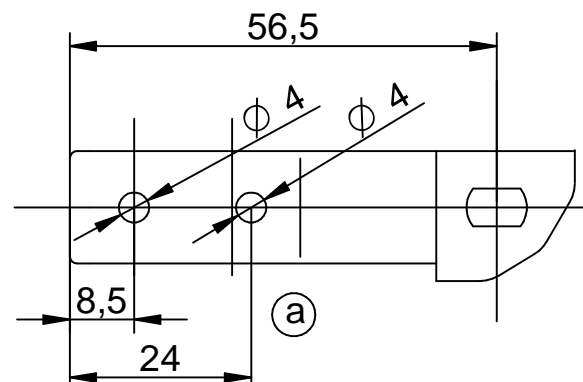
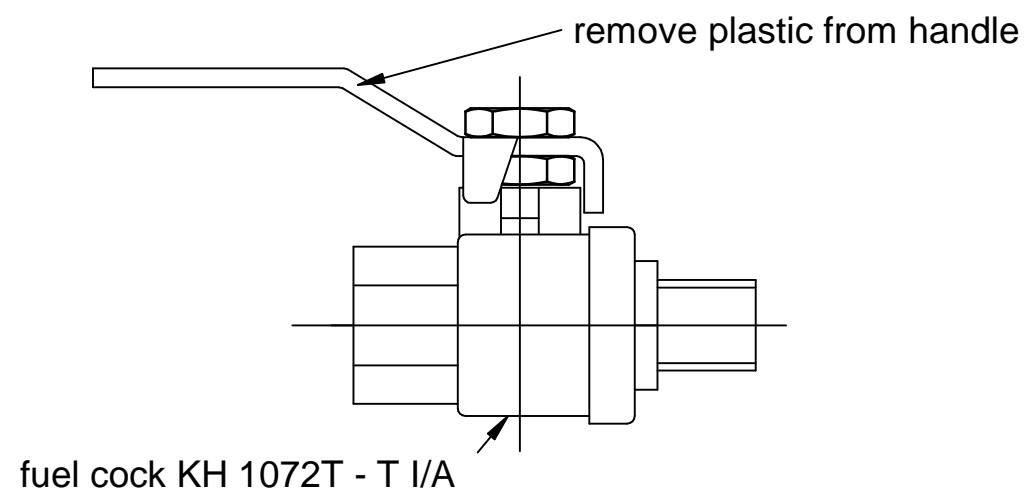



fuel cock KH 1072T - T I/A with fitting 1/4"-9 Würth 06994914 (outside thread) and fitting 1/4"-8 Würth 06995914 (inside thread)

fuel cock view without hoses



Modification of valve handle



Toleranzen nach Arbeitsanweisung BA 1		Tag	Name	DG Flugzeugbau GmbH 76646 Bruchsal Otto-Lilienthal-Weg 2
Schweißen nach Arbeitsanweisung SA 1		Gez.	21.07.14 Thirouin	
		Gepr.	22.07.14 W.Dirks	
		Norm.		 10R224 Seite 4 von 4
		Maßstab	1:1	
		Maße ohne Toleranzang. nach:		
		Fuel cock with switch for fuel cock warning DG-1000M		
Ausg	Änderung	ÄM	Tag	Name