

**Working instruction No. 3 for TN DG-G-09  
DG-808C**

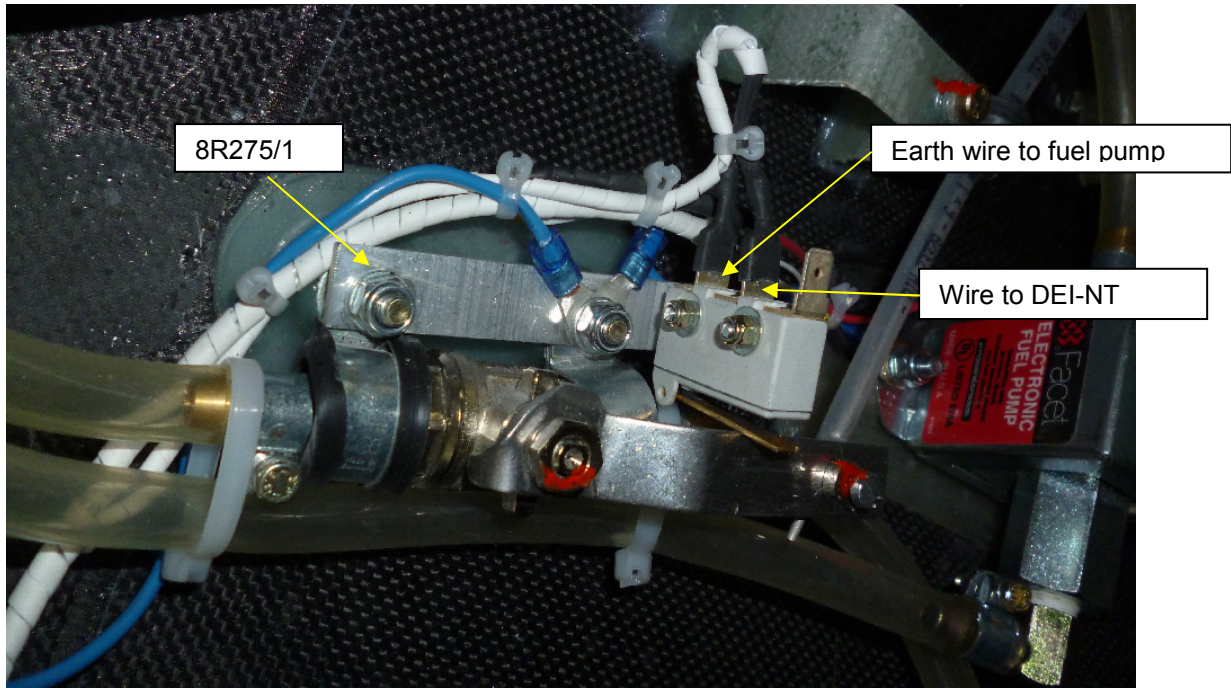
**Installation of a fuel cock warning device in DG-808C**

1. Remove baggage compartment floors and rear wall. Remove the instrument panel cover. Remove the access cover from the right hand side cockpit side panel. Remove the DEI-NT and ship it to DG for modification (software version V19 or higher). Reinstall after modification.
2. Remove nuts and washers which fix the pipe clamps holding the fuel cock to the holder glued to the fuselage floor. Lift off earth wires which are fixed there.
3. Assemble switch (SI2010-B2) to holder 8R275/1 according to drawing 8R275. Place this unit onto the mounting bolts, reinstall earth wires and washers, use new self-locking nuts M6 DIN985-8 zn to fix the unit.
4. Plug wire 8R275/4 (from switch to fuel pump) to the switch terminal (see drawing 8R275) and install the other end of the wire in addition to the other earth wires at the closest fuel pump.
5. Plug wire 8R275/3 (from switch to DEI-NT ) to the switch terminal. Insert a pull-through aid from the front end (access cover in the right hand side cockpit side panel) into the cable tube in which the starter motor wires are routed. Pull in wire 8R275/3. Run wire from there to the DEI-NT. Fix wire with cable ties to existing wires.
6. Pull off DEI plug from the DEI and open the plug. Slip the pin of the wire into position 3 of the plug body. Press the pin with a small screwdriver or similar into the body until it engages. Close the plug, insert and secure it to the DEI.
7. Check the function of the fuel cock warning device: With ignition “on“ a warning message must appear on the DEI-NT screen when the fuel cock is not fully open. As soon as you open the fuel cock fully or if you switch off the ignition, the warning message must disappear.
8. Re-install the parts see item 1.

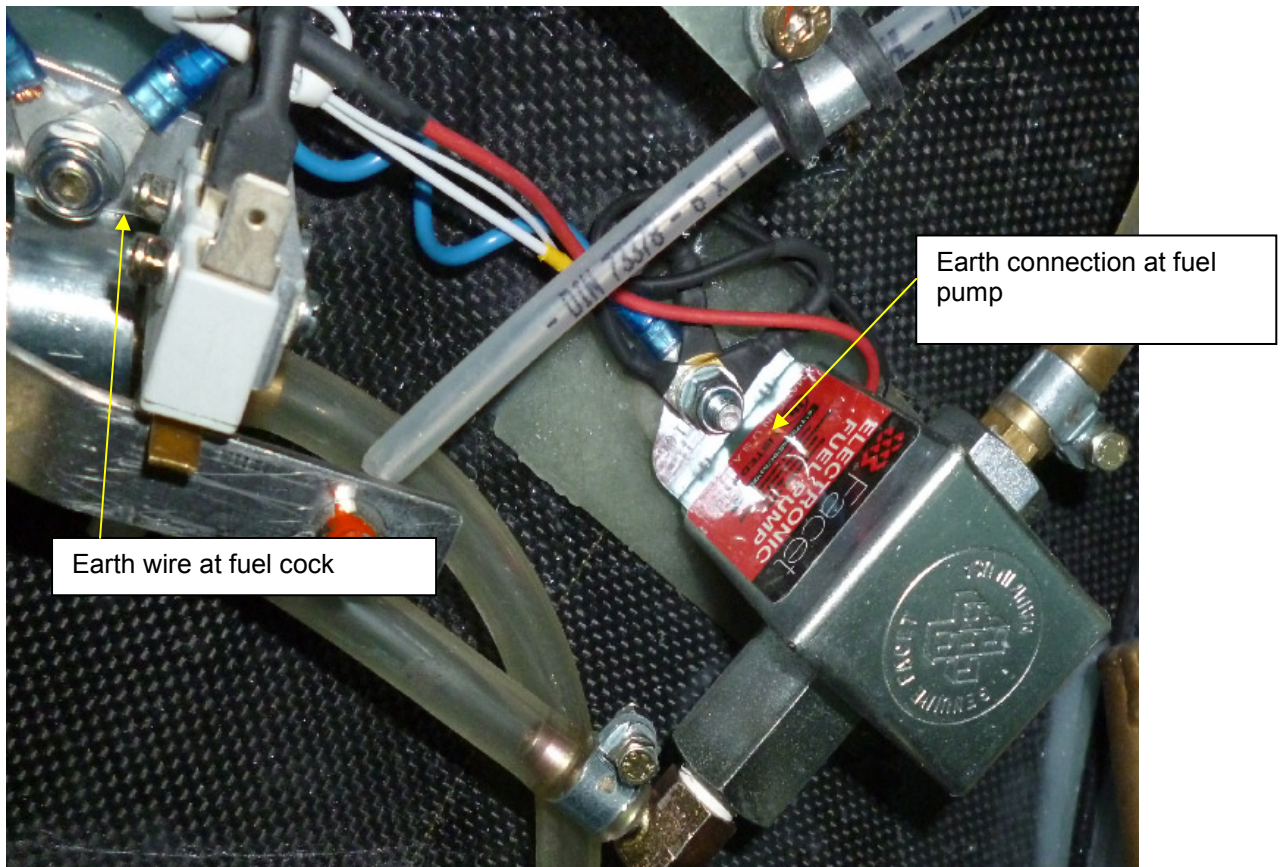
**Material list:** DG part No. 39000182 Material for TN DG-G-09 fuel cock warning DG-808C consisting of:

Quantity	Designation
1	drawing 8R275
1	holder 8R275/1
1	switch SI2010-B2
2	self-locking nut M6 DIN985-8 zn
2	screw M3x20 DIN84-8.8 zn
2	self-locking nut M3 DIN985-8 zn
2	washer 3,2 DIN125 St zn
1	wire from switch to DEI-NT 8R275/3 (partly wrapped together with 8R275/4 with spiral plastic tubing)
1	wire from switch to fuel pump 8R275/4

Working instruction No. 3 for TN DG-G-09  
DG-808C

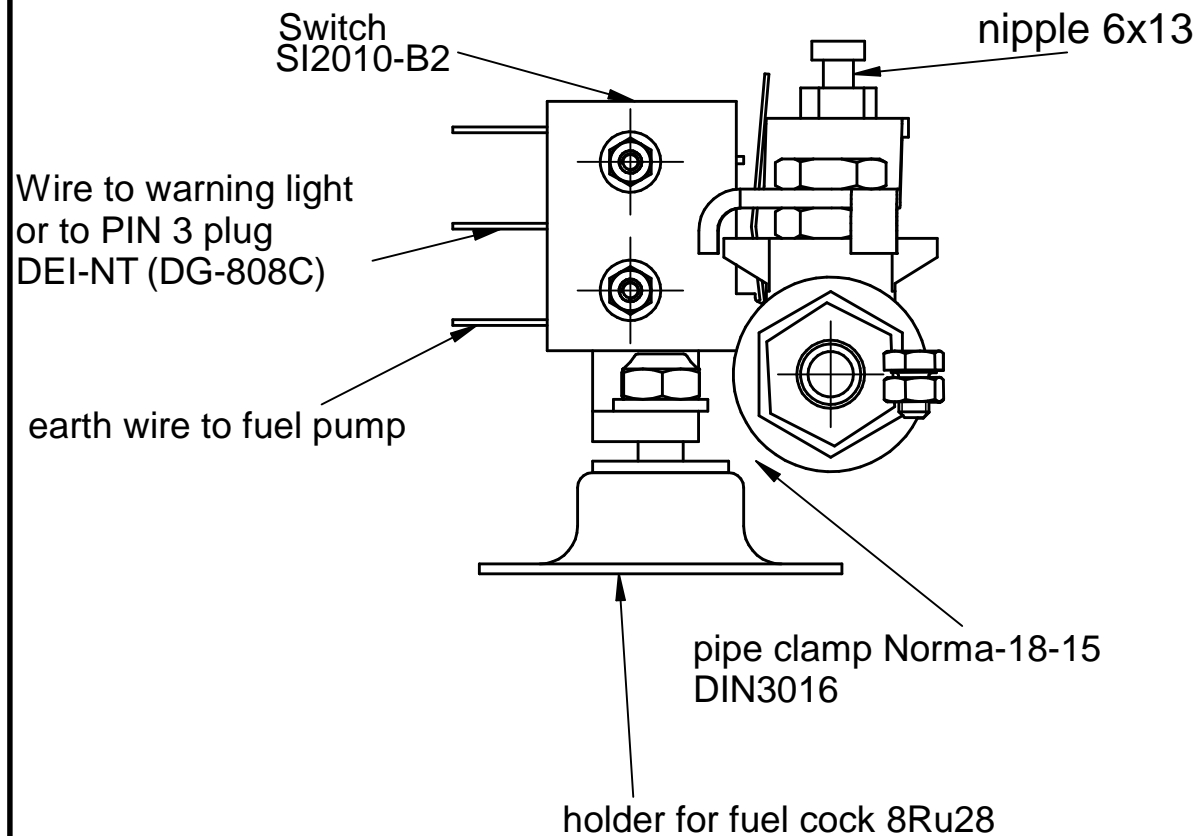


Installation fuel cock with switch for fuel cock warning DG-808C

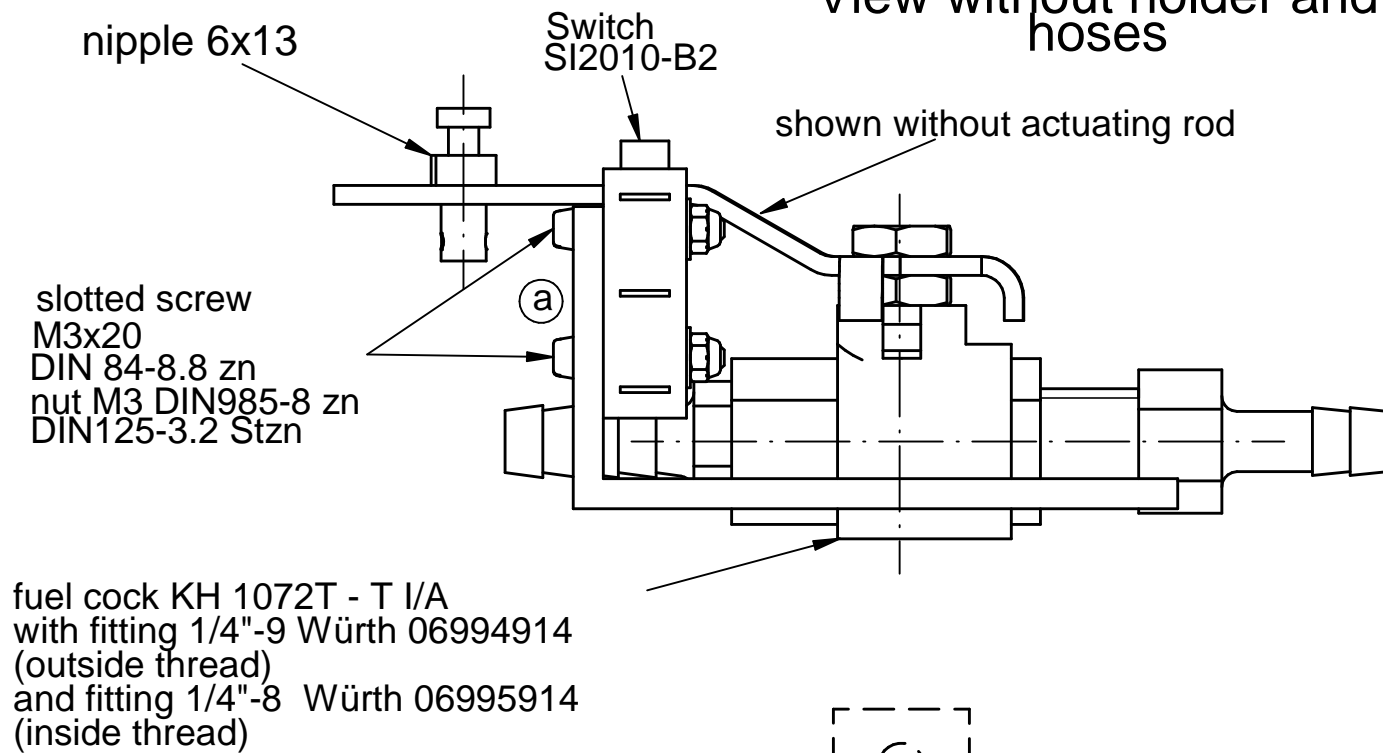


Earth connections

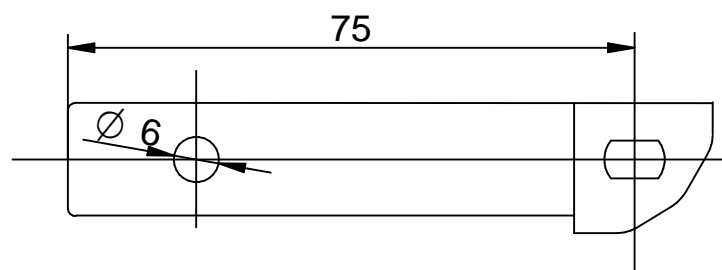
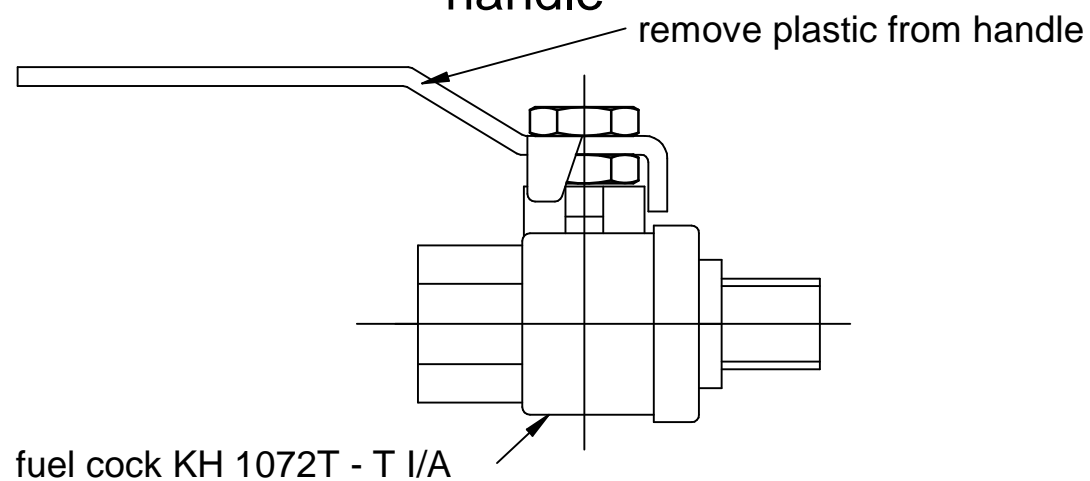
View from right-hand side without hoses



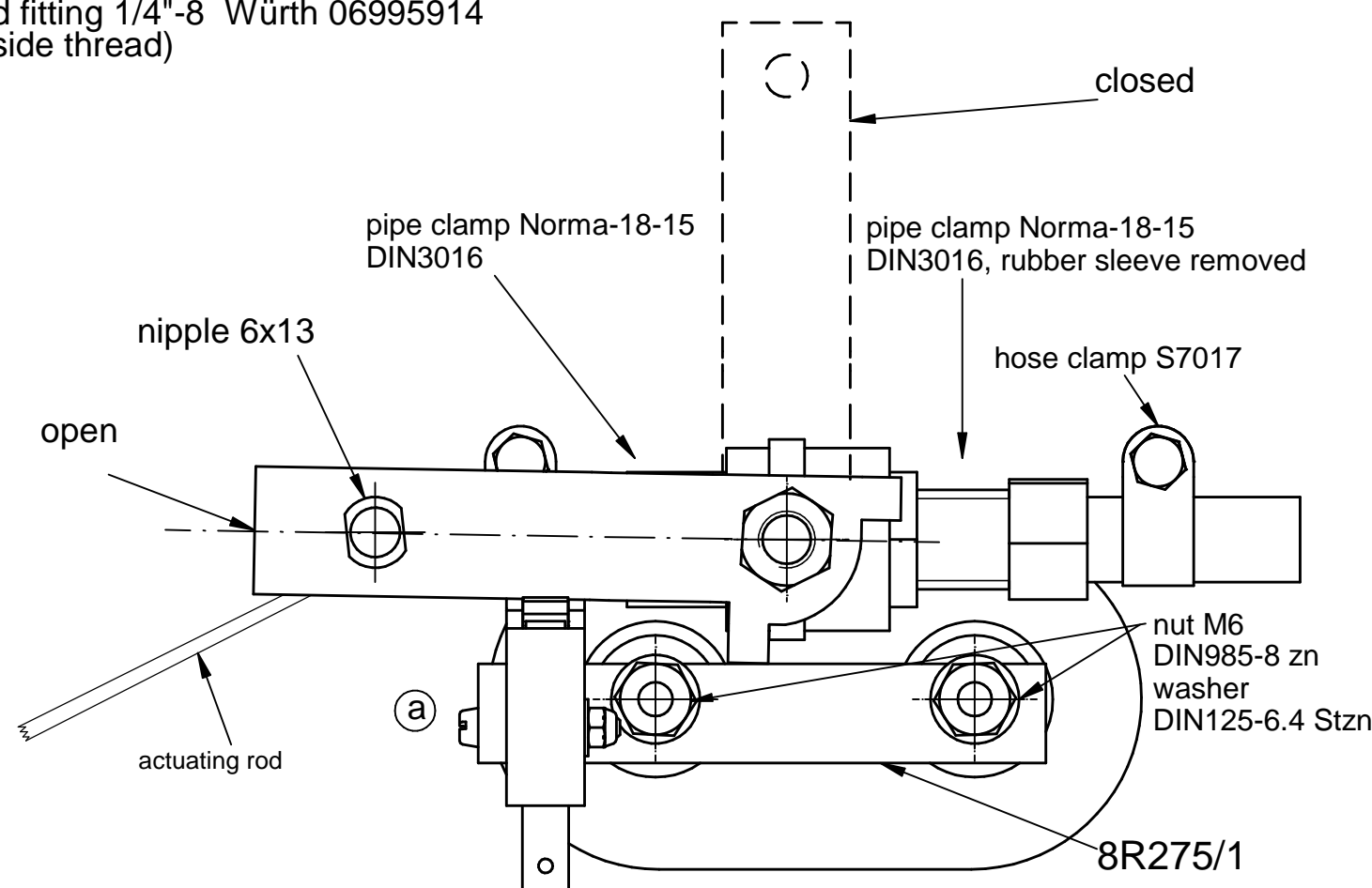
View without holder and hoses




Modification of valve handle



Note for DG-600M: In the DG-600M, the fuel cock is installed on the other side of the holder (glued to the fuselage shell). Change the position of the fuel cock to the position shown in drawing 8R275. This means rotate the pipe clamps. If necessary, exchange the actuating rod against a longer rod.



Diese Zeichnung ist Eigentum der DG Flugzeugbau GmbH. Nicht ausdrücklich freigegebene Vervielfältigung oder Weitergabe an Dritte ist verboten. DG Flugzeugbau GmbH.

Toleranzen nach Arbeitsanweisung BA 1		Tag	Name	DG Flugzeugbau GmbH 76646 Bruchsal Otto-Lilienthal-Weg 2
Schweißen nach Arbeitsanweisung SA 1		Gez. 21.07.14	Thirouin	
		Gepr. 22.07.14	W.Dirks	 <b>8R275</b>
		Norm.		
		Maßstab <b>1:1</b> :		
		Maße ohne Toleranzang. nach:		Fuel cock with switch for fuel cock warning DG-500MB, 500M, 600M, 800
Ausg	Änderung	ÄM	Tag	
				Seite 3 von 3