

**Working instruction No. 2 for TN DG-G-09
LS8-t, LS10-st**

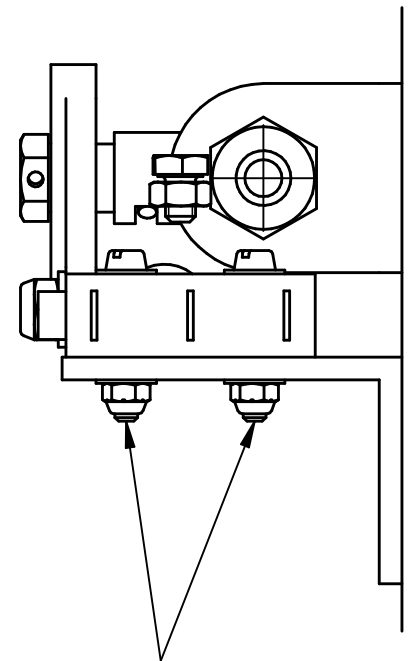
Installation of a fuel cock warning device in LS8-t, LS10-st

1. Remove baggage compartment floors. Remove seat shell according to MM section 4.1.
Remove the DEI-NT and ship it to DG for modification (software version V17 or higher). Reinstall after modification.
2. Assemble switch (SI2010-B2) to holder 9R190/1 according to drawing 9R190. Hold this unit to the fuselage wall so that the switch will be activated by the fully open lever of the fuel cock and mark the holder at the fuselage wall. Roughen the gluing surfaces at fuselage wall and holder. Glue the holder with resin/hardener mix thickened with cotton-flocks to the fuselage wall. Let cure
3. Plug wire 9R190/3 (from switch to DEI-NT) to the switch terminal (see drawing 9R190).
4. Plug wire 9R190/4 (from switch to earth connection) to the switch terminal (see drawing 9R190).
5. Route wires (see 3. and 4.) to the DEI-NT in parallel to the existing instrument lines. Fix wire with cable ties.
6. Pull off DEI plug from the DEI and open the plug. Slip the pin of the wire into position 31 of the plug body. Press the pin with a small screwdriver or similar into the body until it engages. Close the plug, insert and secure it to the DEI.
7. Screw wire 9R190/4 to the earth connection screw at the earth distributor close to the right hand side battery. Fix wire with cable ties.
8. Check the function of the fuel cock warning device: With ignition “on“ a warning message must appear on the DEI-NT screen when the fuel cock is not fully open. As soon as you open the fuel cock fully or if you switch off the ignition, the warning message must disappear.
9. Re-install the parts see item 1.

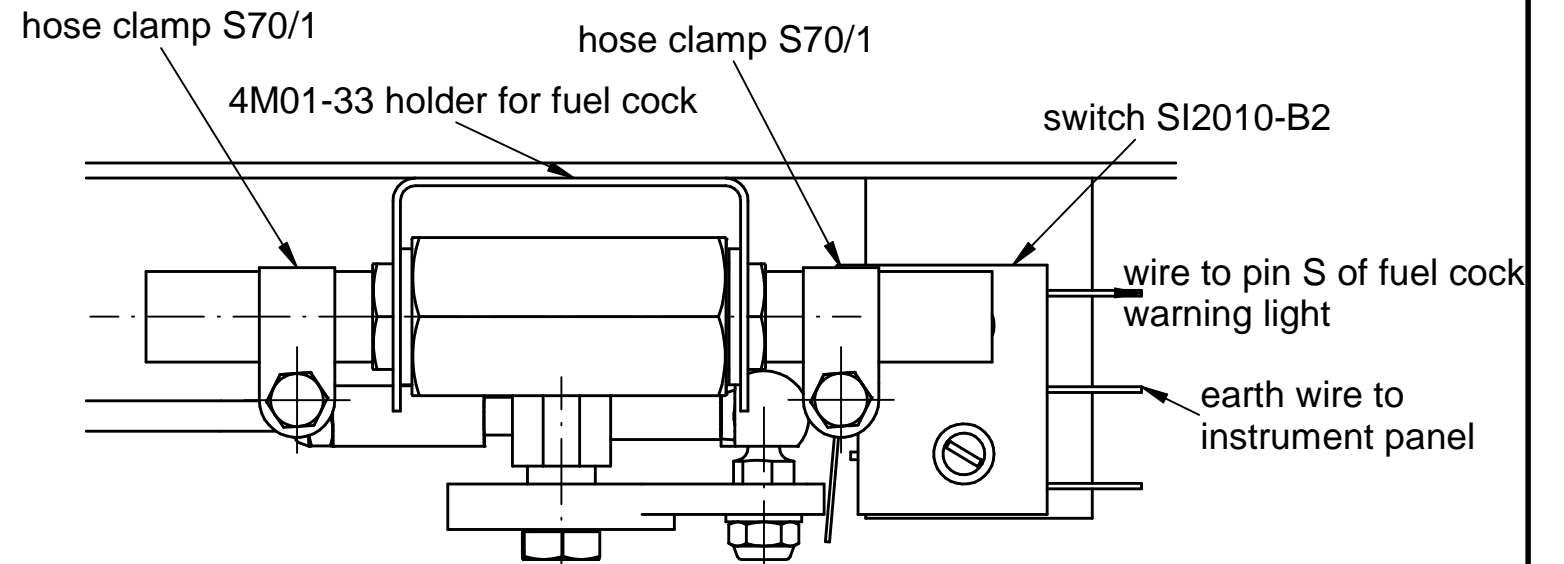
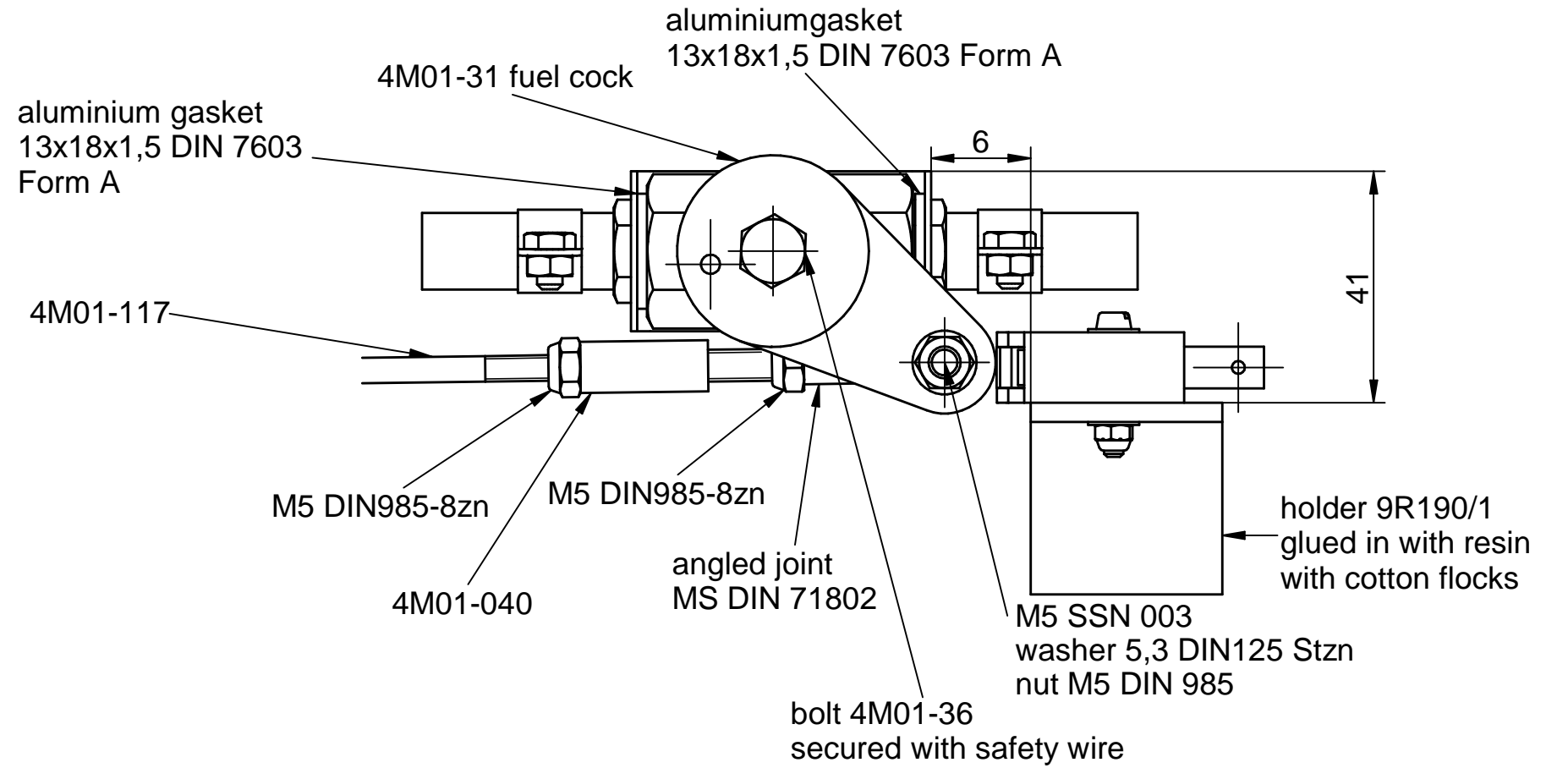
Material list: DG part No. 39000181 Material for TN DG-G-09 fuel cock warning LS8-t, LS10-st consisting of:

Quantity	Designation
1	drawing 9R190
1	holder 9R190/1
1	switch SI2010-B2
2	screw M3x20 DIN84-8.8 zn
2	self-locking nut M3 DIN985-8 zn
2	washer 3,2 DIN125 St zn
1	wire from switch to DEI-NT 9R190/3
1	wire from switch to earth connection 9R190/4


View from right-hand side without pipe clamp and hoses



slotted screw
M3x20
DIN 84-8.8 zn
nut M3 DIN985-8 zn
2x DIN125-3.2 Stzn



Diese Zeichnung ist Eigentum der DG Flugzeugbau GmbH.
Nicht ausdrücklich freigegebene Vervielfältigung oder Weitergabe an Dritte ist verboten.
DG Flugzeugbau GmbH.

Toleranzen nach Arbeitsanweisung BA 1					Tag	Name	DG Flugzeugbau GmbH 76646 Bruchsal Otto-Lilienthal-Weg 2
Schweißen nach Arbeitsanweisung SA 1					Gez.	21.07.14 Thirouin	
					Gepr.	22.07.14 W.Dirks	
					Norm.		 9R190 Seite 3 von 3
					Maßstab	1:1	
					Fuel cock with switch for fuel cock warning LS-8T, LS-10st		
					Maße ohne Toleranz- ang. nach:		
Ausg	Änderung	ÄM	Tag	Name			