

## Working instruction No. 1 for TN DG-G-09 DG-600M, DG-800A/LA, DG-800B

### Installation of a fuel cock warning device in DG-600M, DG-800A/LA, DG-800B

1. Remove baggage compartment floors and rear wall. Remove the instrument panel cover. Remove the access cover from the right hand side cockpit side panel.
2. Remove nuts and washers which fix the pipe clamps holding the fuel cock to the holder glued to the fuselage floor. Lift off earth wires which are fixed there (if existent).
3. Assemble switch (SI2010-B2) to holder 8R275/1 according to drawing 10R224. Place this unit onto the mounting bolts, reinstall earth wires and washers, use new self-locking nuts M6 DIN985-8 zn to fix the unit.

**Note for DG-600M:** In the DG-600M the fuel cock is installed on the other side of the holder (glued to the fuselage shell). Change the position of the fuel cock to the position shown in drawing 8R275. This requires rotation of the pipe clamps. If necessary exchange the actuating rod against a longer rod and adjust the length of the fuel lines.

4. Plug wire 8R275/4 (from switch to fuel pump) to the switch terminal (see drawing 8R275) and install the other end of the wire in addition to the other earth wires at the closest fuel pump.
5. Plug wire 8R275/5 (to terminal S of the light) to the switch terminal. Insert a pull-through aid from the front end (access cover in the right hand side cockpit side panel) into the cable tube in which the starter motor wires are routed. Pull in wire 8R275/5.

**Note:** In case a wire with the crimped on socket terminal can't be pulled through you have to remove the socket terminal. After pulling through, crimp on a socket terminal type RSQ 7600/6,3-1.

Run wire from there to the instrument panel. Fix wire with cable ties to existing wires.

6. Install the fuel cock warning light at a suitable place in the instrument panel (hole dia. 8 mm). Install the placard "Open fuel cock!" as near to the light as possible.
7. Plug wire 8R275/2 (from light to engine master switch) to the + terminal of the light and attach the other end to the engine master switch (right abeam DEI).

The wire must be attached to the switch terminal where the following wire is already attached: 27 DG-600M, 22 DG-800A/LA, 23 DG-800B.

DG-600M, 800A/LA: The wire must be soldered to the terminal, so cut off the plug from the wire.

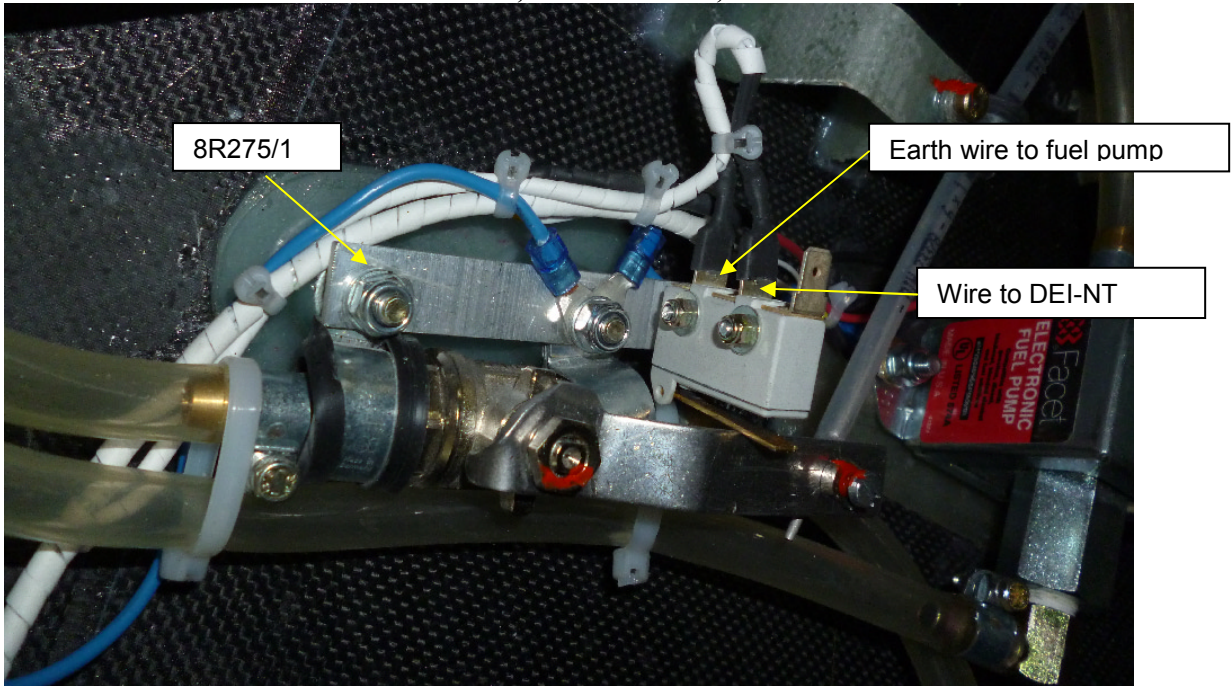
DG-500MB, DG-800B: the wire must be plugged to the switch, use a distributor plug RSQ 7630 / 6,3-1.

8. Plug wire 8R275/6 (from light to earth connection) to the – terminal of the light. Connect the other end to the earth distributor in the right hand side panel.
9. Check the function of the fuel cock warning device: With engine master switch "on" the light must start fast blinking when the fuel cock is not fully open. As soon as you open the fuel cock fully or if you switch off the engine master switch, the light must stop blinking.
10. Re-install the parts see item 1.

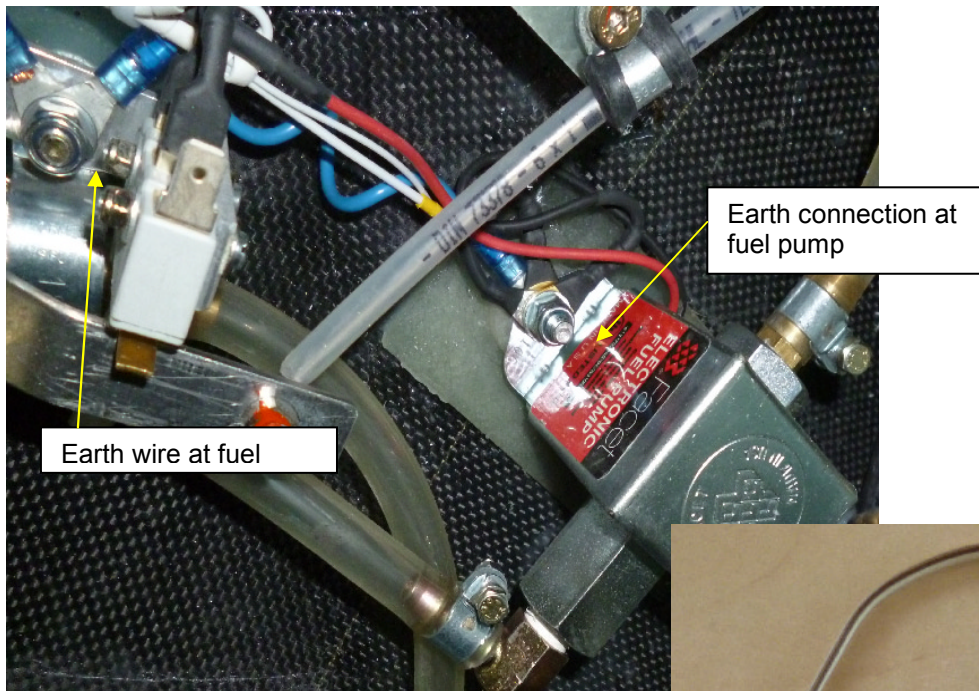
**Material list:** DG part No. 39000180 Material for TN DG-G-09 fuel cock warning DG-600M, DG-800A/LA, DG-800B consisting of:

| Quantity | Designation  |
|----------|--|
| 1        | drawing 8R275  |
| 1        | holder 8R275/1   |
| 1        | switch SI2010-B2   |
| 1        | fuel cock warning light  |
| 1        | placard "Open fuel cock!" white letters on black   |
| 2        | self-locking nut M6 DIN985-8 zn  |
| 2        | screw M3x20 DIN84-8.8 zn   |
| 2        | washer 3,2 DIN125 St zn  |
| 2        | self-locking nut M3 DIN985-8 zn  |
| 1        | wire from light to engine master switch 8R275/2  |
| 1        | wire from switch to fuel pump 8R275/4  |
| 1        | wire from switch to terminal S of the light 8R275/5<br>(partly wrapped together with 8R275/4 with spiral plastic tubing) |
| 1        | wire from light to earth connection 8R275/6  |
| 1        | distributor plug RSQ 7630 / 6,3-1 only DG-500MB  |

Working instruction No. 1 for TN DG-G-09  
DG-600M, DG-800A/LA, DG-800B

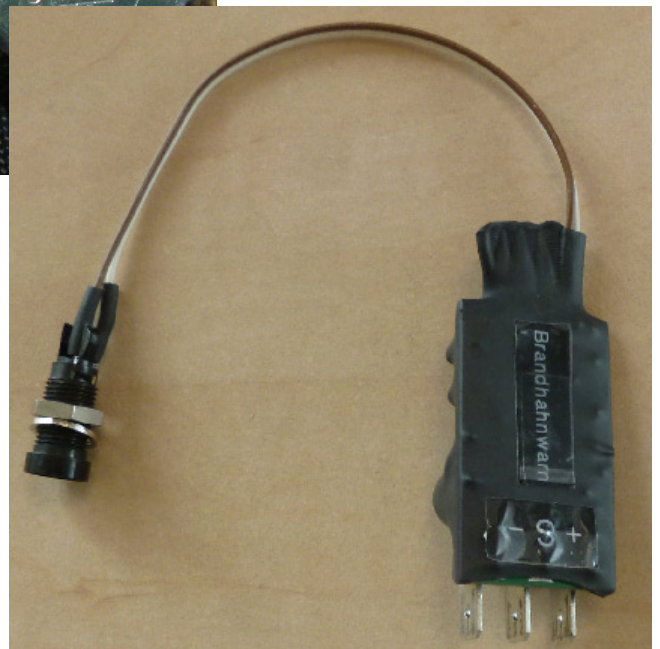


Installation fuel cock with switch for fuel cock warning DG-800B

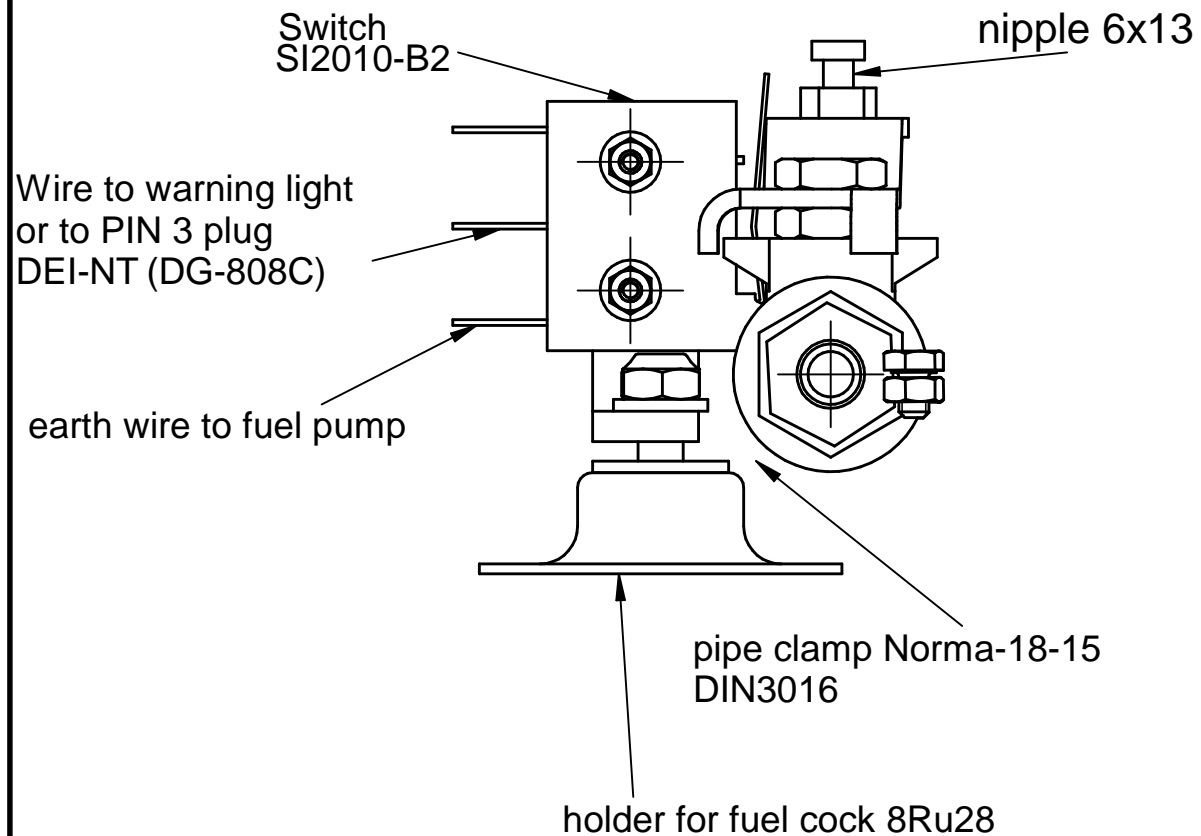


Earth connections

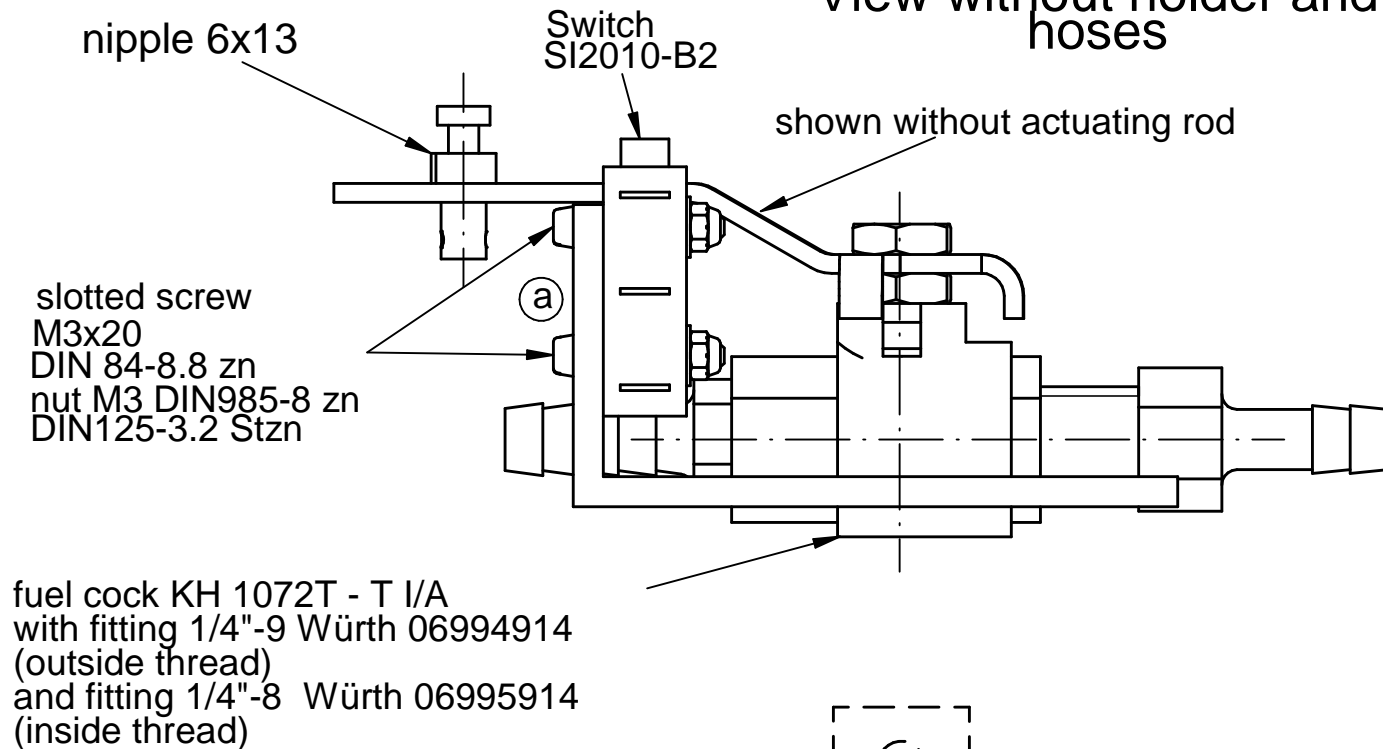
Fuel cock warning light



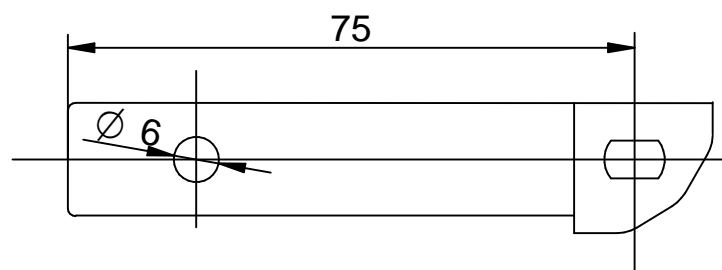
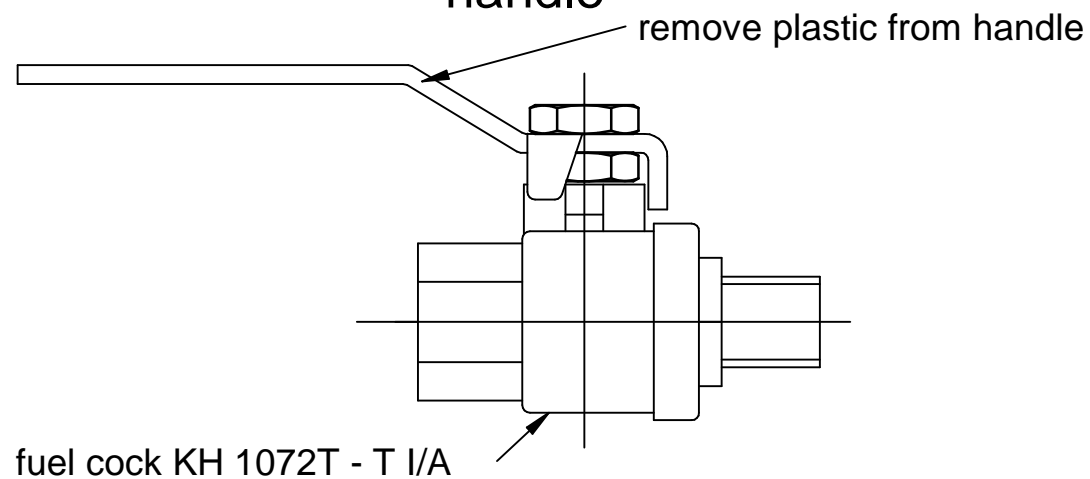
View from right-hand side without hoses



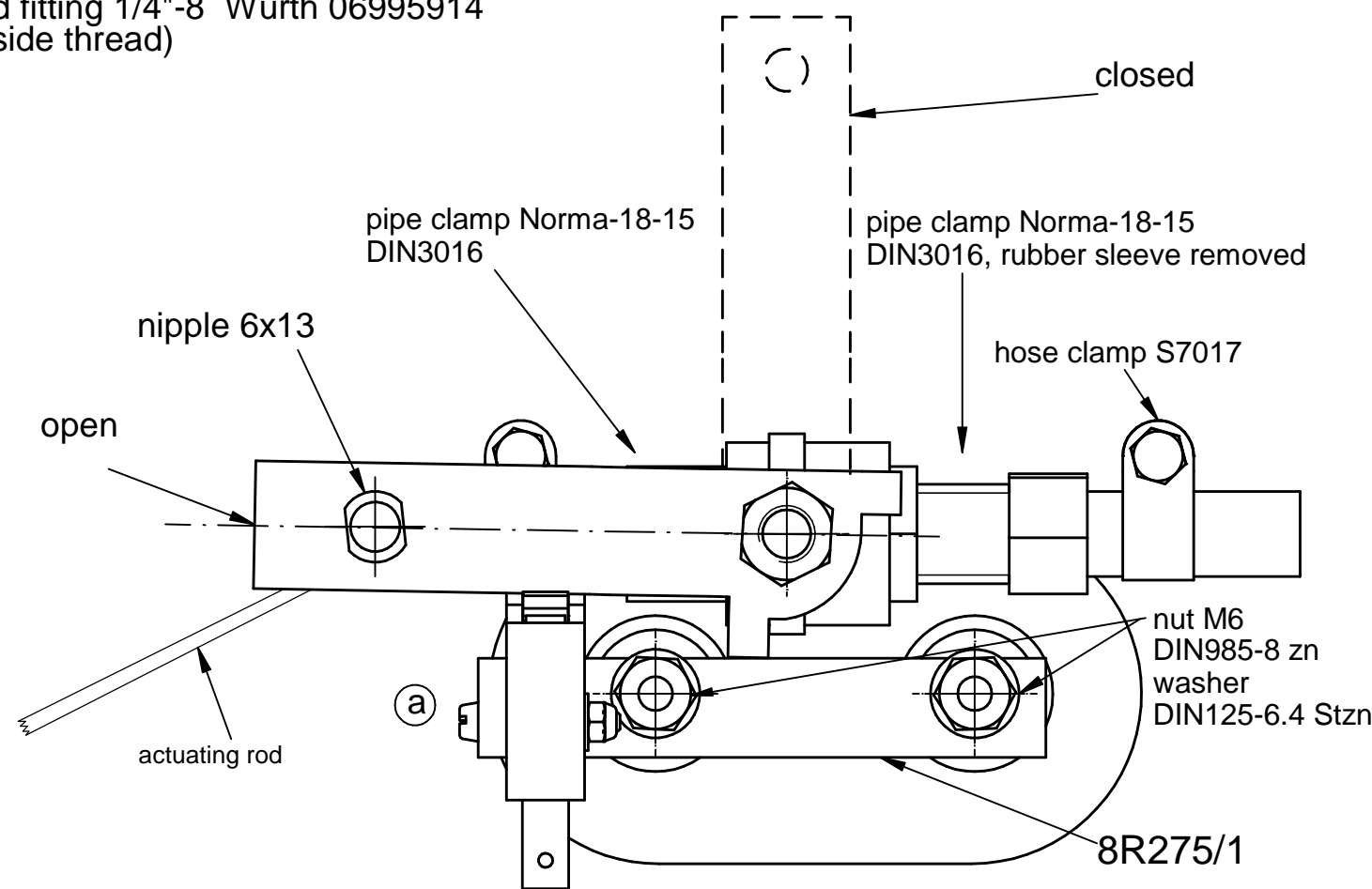
View without holder and hoses




Modification of valve handle



Note for DG-600M: In the DG-600M, the fuel cock is installed on the other side of the holder (glued to the fuselage shell). Change the position of the fuel cock to the position shown in drawing 8R275. This means rotate the pipe clamps. If necessary, exchange the actuating rod against a longer rod.



Diese Zeichnung ist Eigentum der DG Flugzeugbau GmbH. Nicht ausdrücklich freigegebene Vervielfältigung oder Weitergabe an Dritte ist verboten. DG Flugzeugbau GmbH.

|                                       |          |   |                   |   |
|---------------------------------------|----------|---|-------------------|---|
| Toleranzen nach Arbeitsanweisung BA 1 |          | Tag   | Name              | DG Flugzeugbau GmbH<br>76646 Bruchsal<br>Otto-Lilienthal-Weg 2  |
| Schweißen nach Arbeitsanweisung SA 1  |          | Gez.  | 21.07.14 Thirouin |   |
|                                       |          | Gepr.   | 22.07.14 W.Dirks  |   |
|                                       |          | Norm.   |                   | <br><b>8R275</b> |
|                                       |          | Maßstab   | 1:1               |   |
|                                       |          | Maße ohne Toleranzang. nach:  |                   |   |
|                                       |          | Fuel cock with switch for fuel cock warning DG-500MB, 500M, 600M, 800 |                   | Seite 3 von 3   |
| Ausg                                  | Änderung | ÄM  | Tag               | Name  |