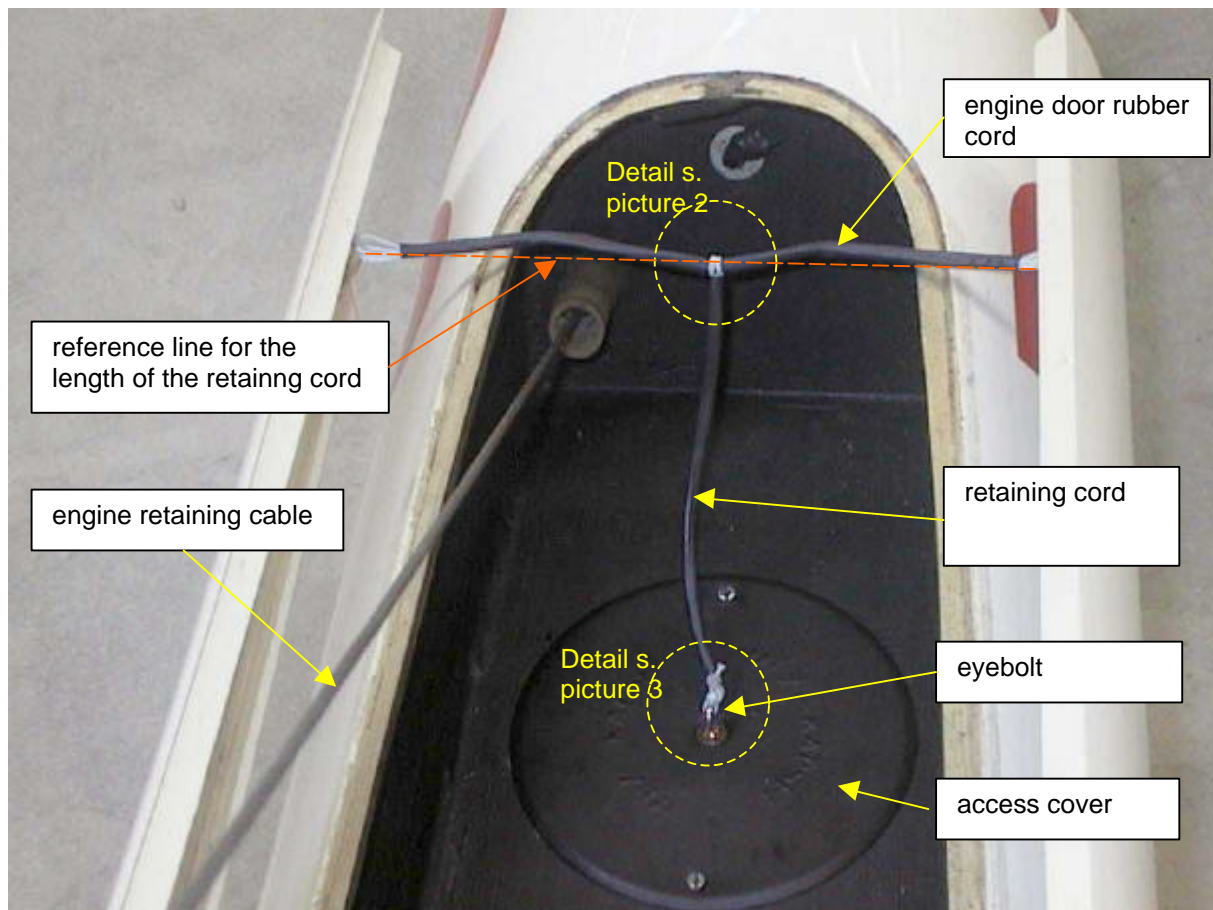
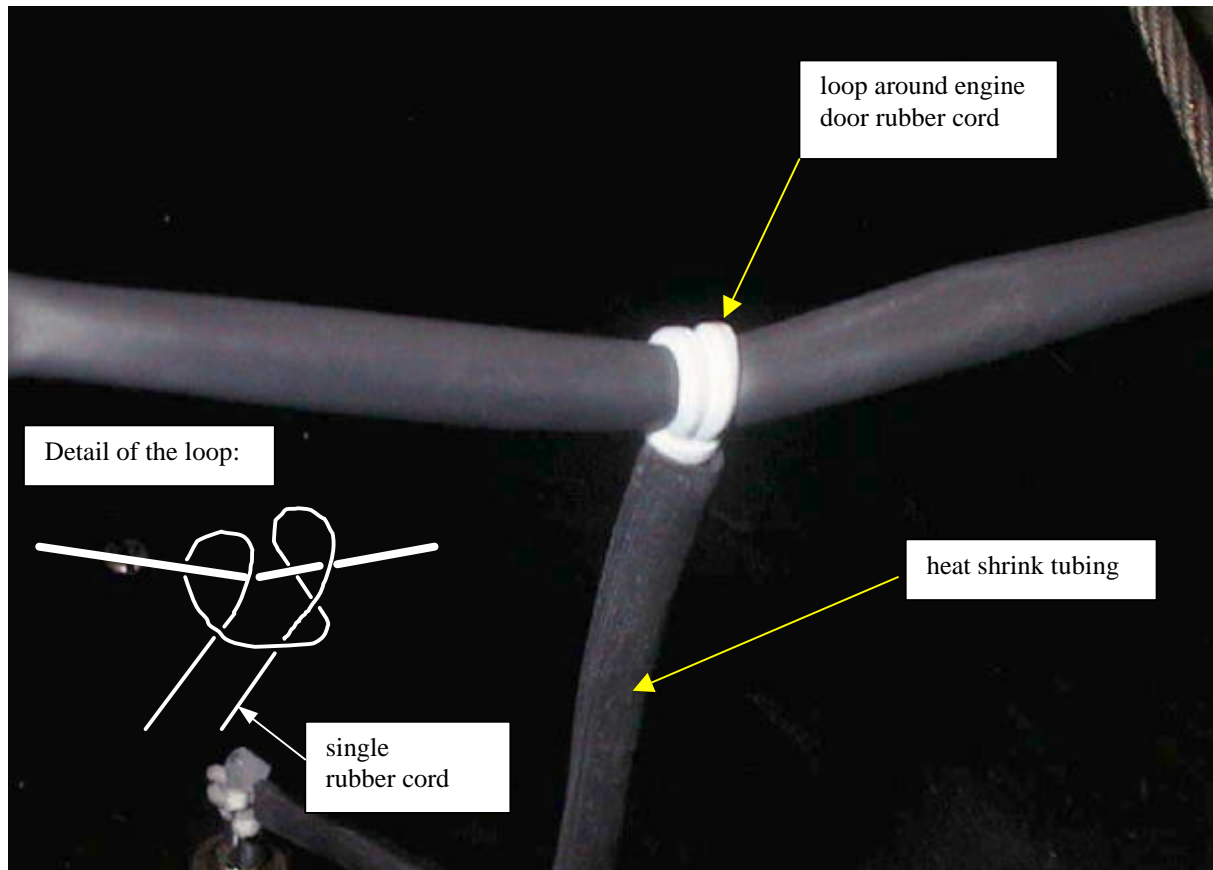


Installation of the additional retaining cord at the rear engine door rubber cord

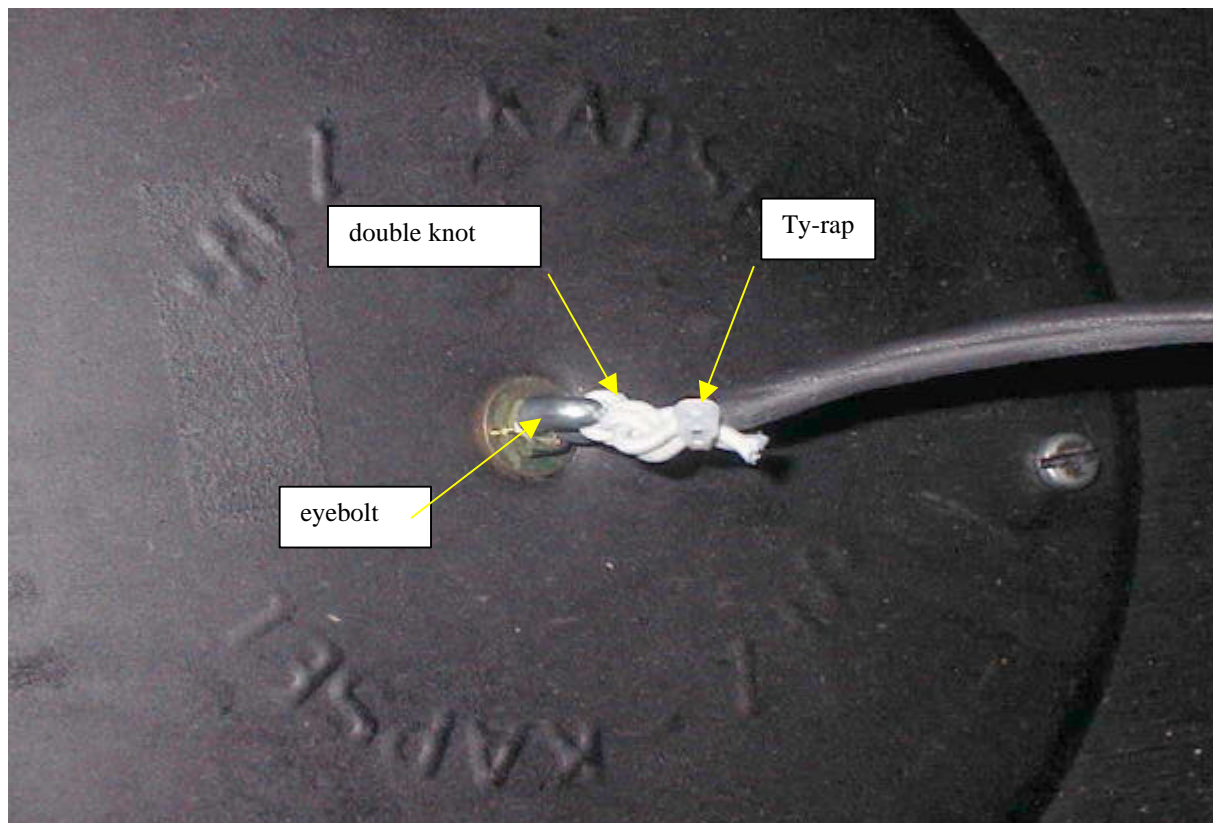
1. Extend the powerplant completely via the manual switch.
2. Remove the access cover from the rear engine bay bulkhead by taking out the 2 screws.
3. Remove the screw which is in the centre of the access cover and replace it by an eyebolt M4x15 with counter nut M4DIN439Bzn, washer 4,3 DIN9021 Stzn and self locking nut M4 DIN985-8.8zn according to drawing 5R172.
4. Reinstall the access cover.
5. Install a dia. 2mm rubber cord according to picture 2 (detail of the loop) to the engine door rubber cord.
6. Determine the distance x from the reference line (see picture 1) to the eyebolt. Prepare a heat shrink tube of length $l=x-10\text{mm}$ and push over the rubber cord.
7. Shrink the heat shrink tubing carefully with a heat gun..
8. Fix the 2mm rubber cord with a double knot to the eyebolt (see picture 3). Adjust so that the knot at the engine door rubber cord is on the reference line and the retaining cord is not quite tensioned.
9. Check: Retract the powerplant just so far that the propeller almost touches the engine door rubber cord. Test if you can move the engine door rubber cord on top of the propeller. If this is still possible shorten the retaining cord accordingly. Check in addition that the engine door rubber cord does not touch the engine retaining cable with the powerplant extended.
10. If everything is OK secure the ends of the retaining cord with a ty-rap and cut off the excess rubber cord see picture 3.



picture 1: general view after installation of the retaining cord

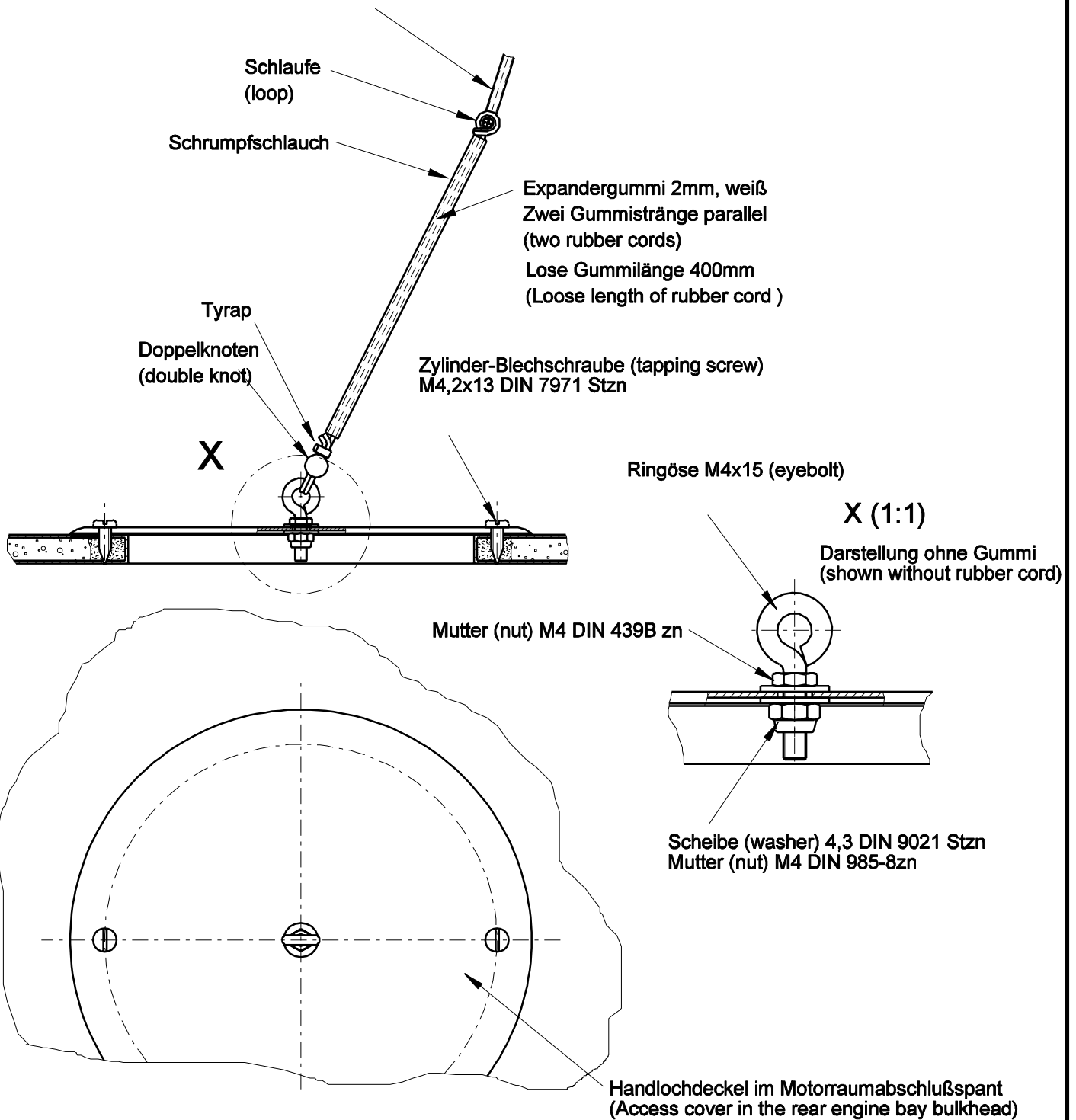



picture 2: Connection of the retaining cord with the engine door rubber cord



picture 3: Connection of the retaining cord to the eyebolt

Hinteres Motordeckelgummi
(rear engine door rubber cord)



Toleranzen nach Arbeitsanweisung BA 1		Tag	Name	DG Flugzeugbau GmbH 76646 Bruchsal 4 Im Schollengarten 20
Schweißen nach Arbeitsanweisung SA 1		Gez.	12.09.01 S. Lehner	
		Gep.		
		Norm.		 5R172
		Maßstab	Zusätzliches Haltegummi für die Motordeckel der DG-500MB	
		1:2	Additional retaining cord for the DG-500MB engine doors	
		1:1		
		Maße ohne Toleranz- ang. nach:		
Ausg.	Änderung	ÄM	Tag	Name