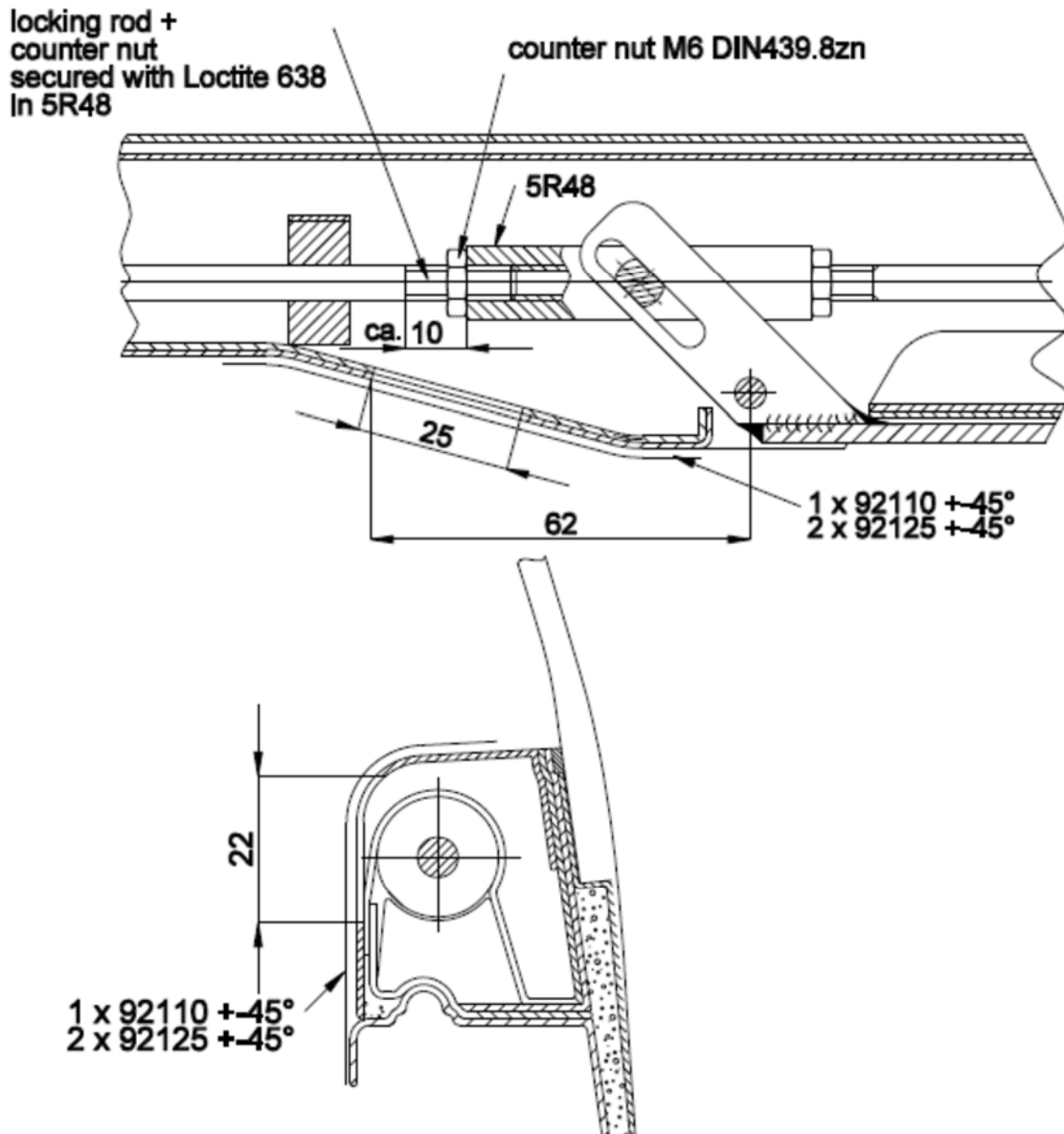


Repair instruction RI-DG-05
for TN1000/42 and TN500/13 instruction 3
Canopy lock, rear locking rods

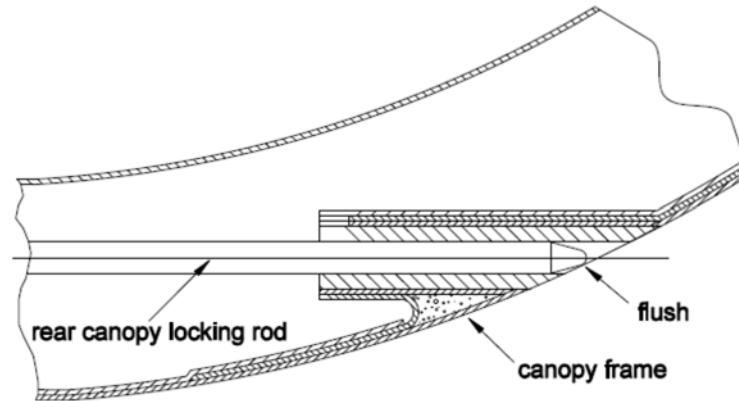
1. Remove the canopy with loose locking rod from the fuselage.
In case the canopy lock can't be opened any more as the rear locking rod came loose completely you may try to push the rod forward through its hole from the baggage compartment (only possible with the rear canopy). In case a canopy switch is installed in the hole it must be removed. If it isn't possible to push the rod forward you have to perform item 2 with the canopy still closed. Pull the rod forward through the produced hole.
2. Produce a hole approx. 25 mm x 22 mm (1 inch x 0.87 inch) into the inner canopy frame according to the following sketches. Use a dia. 6mm (0.25 inches) diamond coated cutter. Be careful not to damage any of the interior parts. Remove the paint approx. 20 mm (0.8 inches) around the hole.



Repair instruction RI-DG-05
for TN1000/42 and TN500/13 instruction 3
Canopy lock, rear locking rods

3. Screw out the locking rod completely. Clean the threads of the locking rod, the nut and the counter part with Loctite cleaner 7063 or Acetone. Apply Loctite 638 to the threads. Screw in the rod so far that with canopy lock completely open the end of the rod is flush with the contour of the canopy frame, see sketch:

Rear canopy shown



4. Then close the canopy lock and fix the locking rod against rotation using small pipe pliers and a piece of abrasive paper 240 grid around the rod to protect the rod from damage. Tighten the counter nut as far as possible.
5. Laminate glass-fibre fabric 1 x 92110 $\pm 45^\circ$ and 2 x 92125 $\pm 45^\circ$ on a plastic film with epoxy resin/hardener mix (appropriate types see repair manual).
6. Put the fabric with the film on the canopy frame. Remove the film and cut off excessive fabric.
7. Let cure at room temperature, post cure the repair area with min. 54°C for at least 18 hours.
8. Grind the edges and smoothen the surface with putty if necessary.
9. Re-paint the area with Nextel-Suede-Coat. 3101 B21 or cover the repair area with a suitable tape.
10. Re-install the canopy switch if removed before.
11. Re-install the canopy and check the canopy warning if existent.