

Subject: Mounting of the electronic ignition boxes

Effectivity: DG-400 serial no. 4-1 up to 4-140

Accomplishment: within 30 days

Reason: On some DG-400's the mounting screws of the ignition boxes failed due to vibration stress. For this reason the dia. 6mm screws will be replaced by dia. 8 mm screws. The airworthiness is not affected if the screws fail. But it may happen that the engine can't be retracted completely with all 3 screws broken.

Instructions: 1. Exchange diagram 6 of the maintenance manual for the new issue Sept. 1985.
2. Execute the modification following the enclosed instruction "Modification of the mounting of the electronic ignition boxes".

Material: Diagram 6 maintenance manual Sept. 85
Instruction "Modification of the mounting of the electronic ignition boxes"

3	hexagonal adapters	M 8 x 39	
3	Screws	M 8 x 20	DIN 7991-8.8 zn
3	Bolts	M 8 x 25	DIN 912-8.8 zn
3	washers	8,4	DIN 125 B Stzn
1	special washer	Ø 8,4 x Ø 14 x 1	
3	Ty-wraps	TY 2315 M	
1	"	TY 244 M	

Remarks: These measures may be executed by the owner himself and are to be entered in the aircraft logs mentioning TN 826/13.

Bruchsal 4, Sept. 30. 1985

Signature:

W. Dirks
Dipl.-Ing. W. Dirks

Approval of translation has been done by best knowledge and judgement. - In any case the original text in German language is authoritative.

LBA-approved:



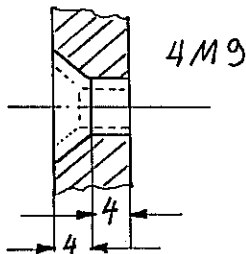
Spring 01. Okt. 1985

Instruction:

Modification of the mounting of the electronic ignition boxes.

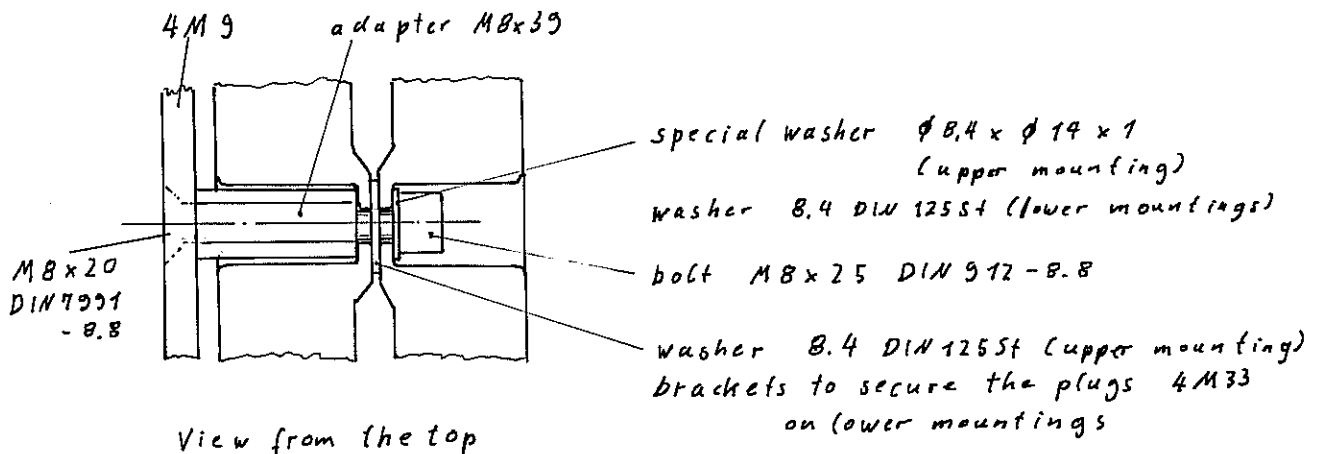
Note: Secure all screwed connections with loctite 72 b (672)

1. Dismount the ignitionboxes and their aluminiummounting plate 4 M 9. Therefor you have to dismount the propeller brake 4 M 16/1 too. The bracket 4 M 46 should not be removed. (No.'s see maintenance manual diagram 6.)
2. Dismount the hexagonal adapters from plate 4 M 9.
3. Enlarge the 3 drilled holes to dia. 8.5 mm and the countersunk with a 90° countersink tool see scetch.

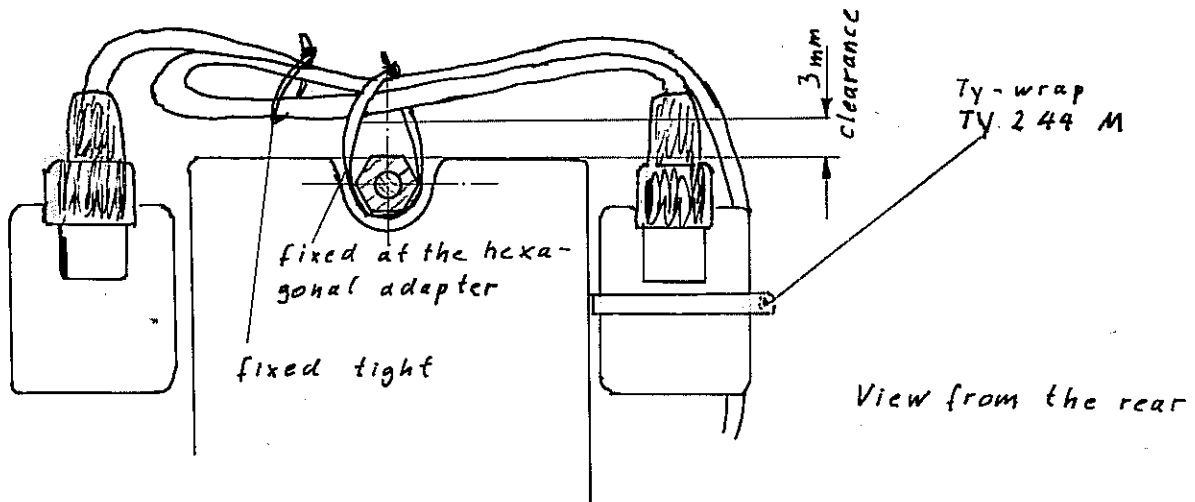


d.a. 8.5 mm = .335 in.
4 mm = .157 in.

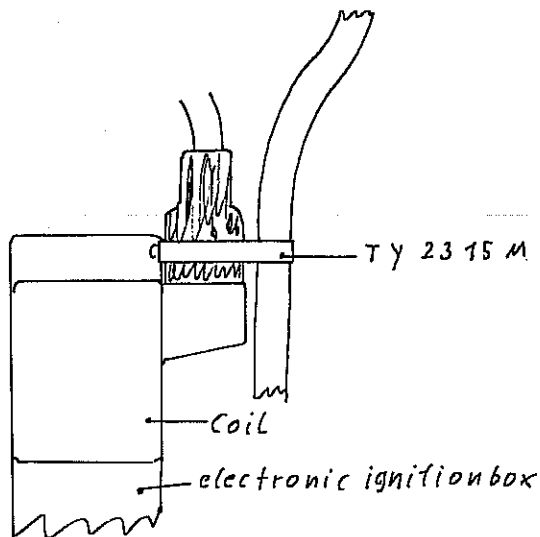
4. Assemble the adapters M8x39 to plate 4 M 9 with screws M 8 x 20 DIN 7991-8.8 and mount the plate at the engine again.
5. Enlarge the holes in the holding plates 4 M 33 of the plugs to dia. 8.5 mm
6. Enlarge the mounting holes of the electronic ignitionboxes to dia. 8.5 mm. Use a round file at the upper mounting point.
7. Mount the ignition boxes see scetch below. Don't mount the clamp which was holding the ignition cables. Use new bolts and washers see scetch:



8. Fix the ignition cables with 2 Ty-wraps TY 2315 M, see sketch.



9. Fix the shielded cable coming out of the engine see sketch to the ignition cable of the right front coil using a ty-wrap TY 2315 M



7520 Bruchsal 4, Sept. 30. 1985

Wilhelm Dirks

Dipl.-Ing. W. Dirks