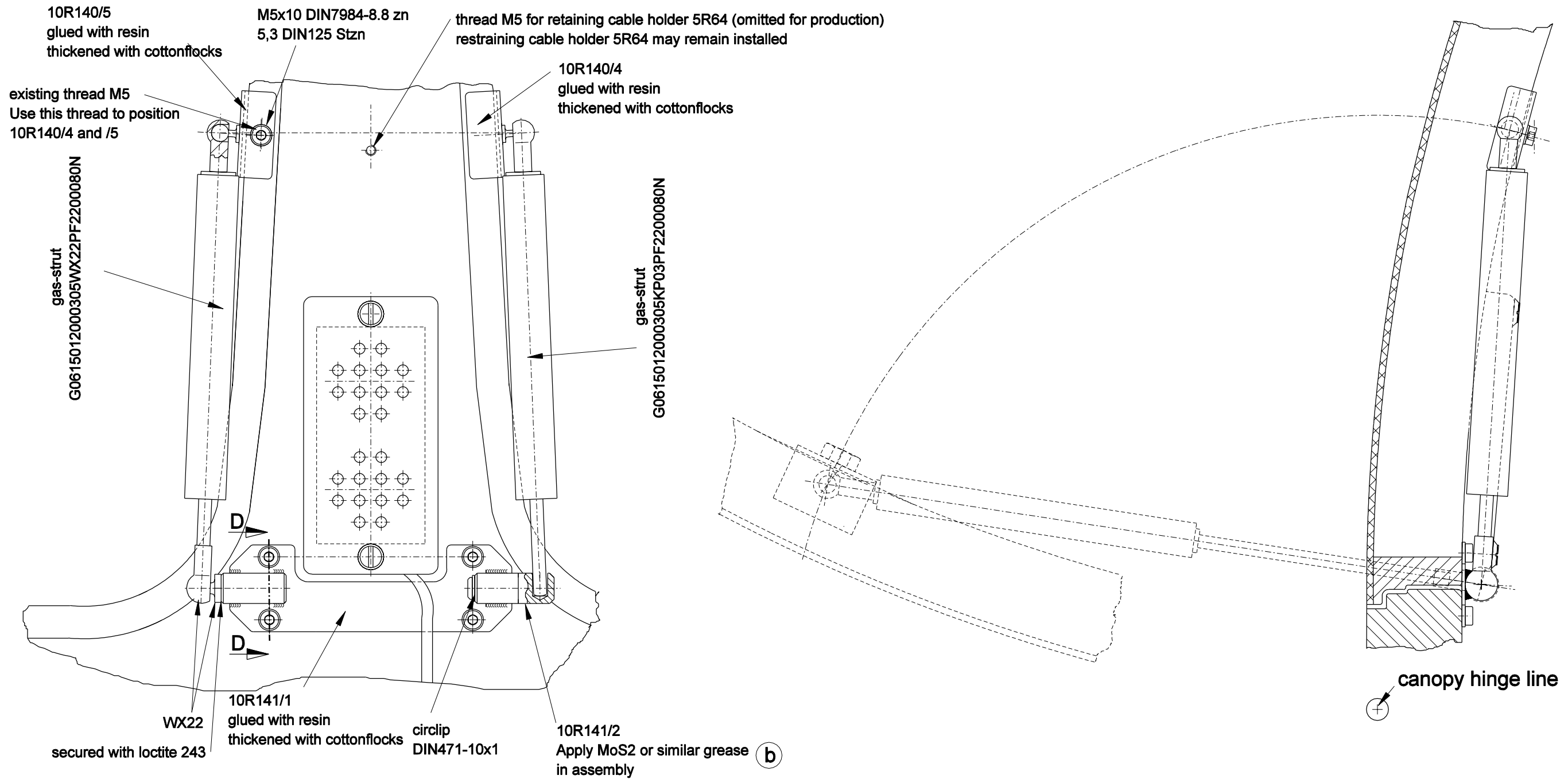
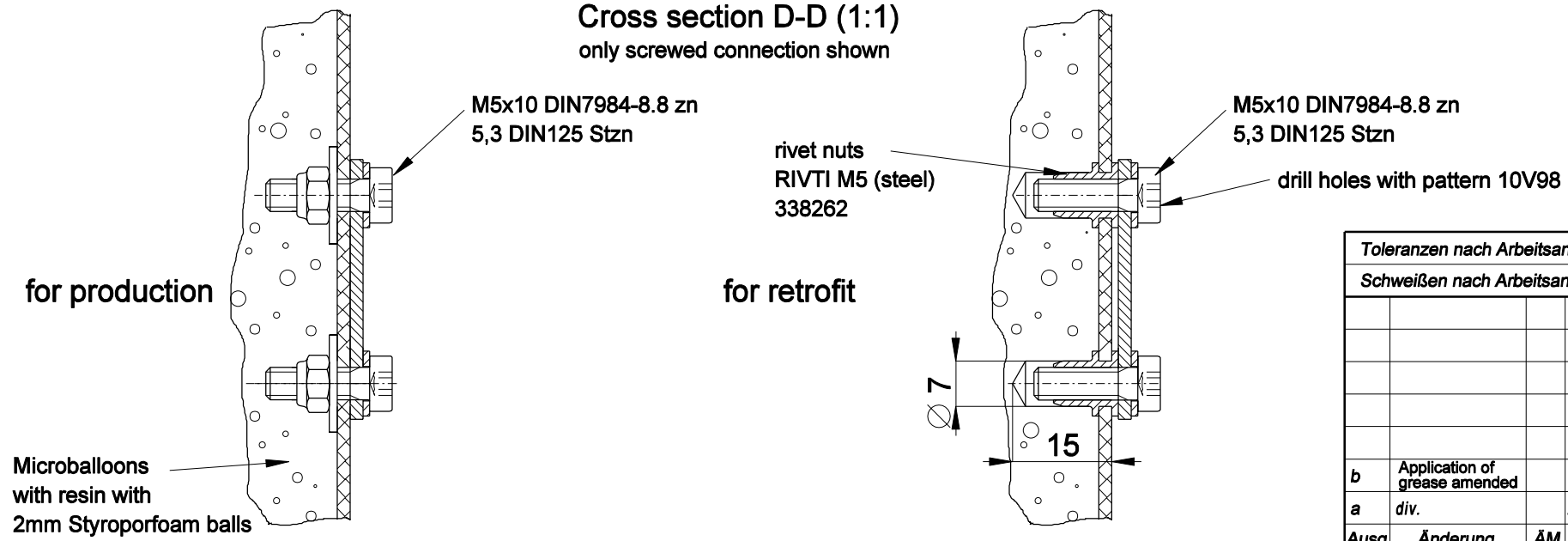


direction of flight

Note: rear canopy retaining cable 10R35 still necessary!



Cross section D-D (1:1)
only screwed connection shown



Note: Don't install the locking devices for the gas-strut connectors!

Toleranzen nach Arbeitsanweisung BA 1					Tag	Name	DG Flugzeugbau GmbH 76646 Bruchsal Otto-Lilienthal-Weg 2
Schweißen nach Arbeitsanweisung SA 1					Gez.	10.09.04 Vespermann	
					Gepr.		
					Norm.		
					Maßstab		Gas-strut mechanism for canopies Installation
					1:2		
					1:1		
b	Application of grease amended	16.06.05	Lehner	Maße ohne Toleranz- ang. nach:			DG 10R142
a	div.	27.10.04	W.Dirks				
Ausg	Änderung	ÄM	Tag	Name			