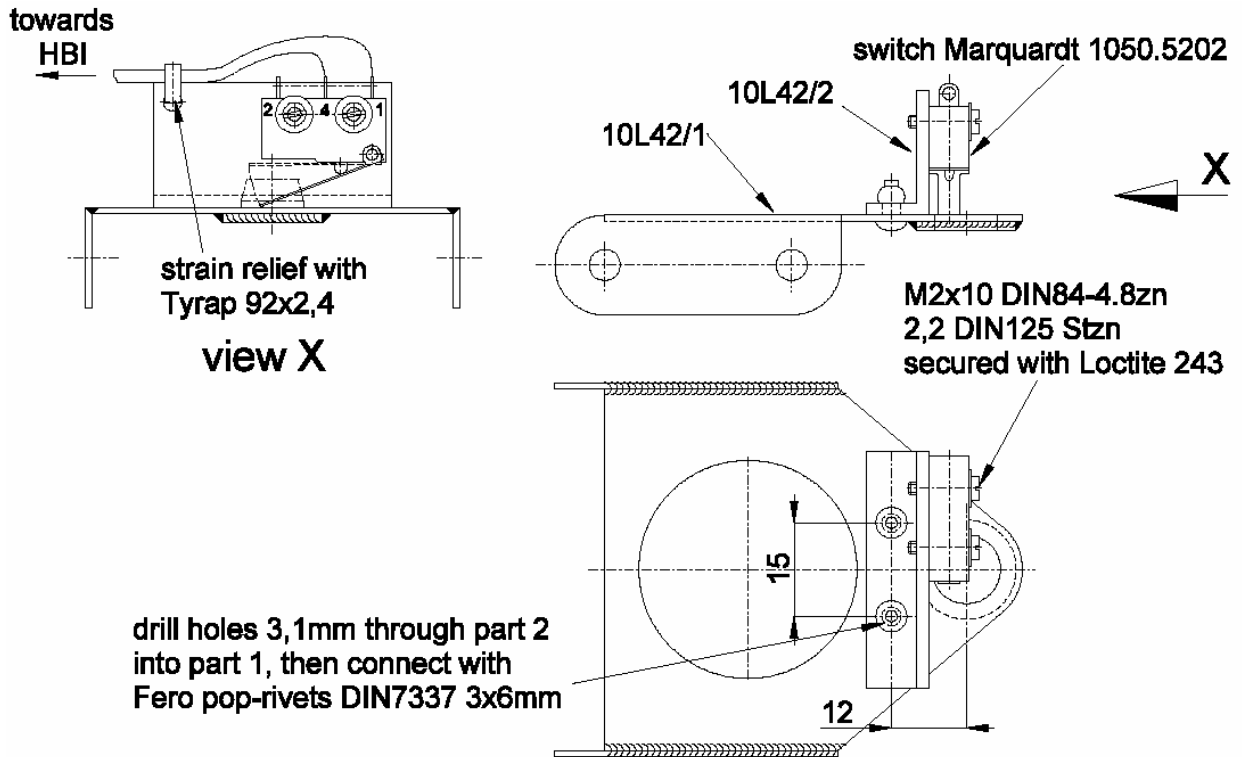


1. Remove the box for the ballast-info (above in the ballast box) and send to DG for modification.
Remove the upper support 10L42/1 of the ballast box cover to install the holder 10L42/2 with the switch (see sketches).



Solder the 2 free wires which come out of the plug of the modified box for the ballast-info to the switch (see sketch).

Reinstall the box and the support, secure bolts with Loctite 243.

2. Remove the lower support 10L43/1 of the ballast box cover to install the securing plate 10L43/2 (see sketches).
Reinstall the support, secure bolts with Loctite 243.

