

Maintenance manual DG-1000S

No.	Page	Description	Date
15	0.3 ÷ 0.8, 0.10 ÷ 0.12, 1.3, 1.5, 1.11, 1.16, 1.18, 1.19, 2.1, 2.6, 3.1, 4.6, 4.10, 4.12, 4.13, 6.1, 7.1, diagrams: 2, 3, 9, Enclosure 1 pages: 5, 8	Manual revision TN 1000/24, New type 12V sockets and plugs	October 2014
16	0.3, 0.4, 1.11	TN1000/34 small nose wheel	October 2017
17	0.3 - 0.7, 0.10, 0.11, 0.12, 1.3, 1.12, 1.14, 2.6, 4.9, 4.11, 6.1, 6.3 Enclosure 1 pages 5-7, Diagrams 2, 5, 5a, 7, 7a, 11, 20, Drawings 10E13, 10R146	TM1000/41 Manual revision	December 2018
18	0.3, 0.6, diagram 11	TN1000/41 revision 1	May 2019

Maintenance manual DG-1000S

0.2 List of effective pages (continued)

diagram	issued	replaced	replaced	replaced	replaced
1	Nov. 2001	May 2004	Oct. 2010		
2	Nov. 2001	Oct. 2014	Dec. 2018		
3	Nov. 2001	May 2008	Oct. 2014		
4	Nov. 2001				
5	Nov. 2001	Dec. 2018			
5a	Dec. 2018				
6	Nov. 2001	March 2008	March 2008	Not valid for 10-101, and from 10-128 on	
6a	March 2008				
7	Nov. 2001	Sept. 2003	Nov. 2004	Dec. 2018	
7a	Oct. 2008	Dec. 2018			
8	Nov. 2001	July 2011			
9	Nov. 2001	Jan. 2008	Febr. 2011	July 2011	Oct. 2014
10	Nov. 2001				
11	Nov. 2001	Sept. 2003 May 2019	May 2004	May 2008	Dec. 2018
12	Nov. 2001	Sept. 2003			
17	Febr. 2008				
18	Febr. 2008				
20	Nov. 2008	Dec. 2018			
21	Nov. 2008	Oct. 2010			
22	Nov. 2008				
5EP34	25.01.1990				
5V18	14.10.1994				
10FW2	5.10.1999				
10E3	28.11.2008	28.02.2011			
10E4 issue A	28.10.2008				
10E4 issue E	8.10.2010				
10E13	12.12.2018				
Encl. 1	Nov. 2008	Page 2, 2a, 8 Oct. 2010	1, 2, 2a, 4 8, Febr. 2011	5, 8 Oct. 2014	5-7 Dec. 2018
Encl. 2	March 2011	June 2012			
10EP41	4.02.2011				
10E6	23.02.2011	23.02.2012			
SI 67-07	5.11.2007				
Z193	4.11.2009				
10R146	7.01.2019				

placards DG-1000S

DG Flugzeugbau GmbH

Type: DG - 1000S Serial No.: 10- S

Year of construction:

	km/h	kts.
Winch launching	150	81
Aero-tow	185	100
Manoeuvring V _A	185	100
Rough air	185	100
Maximum speed V _{NE}	270	146

Approved aerobatic manoeuvres, only without waterballast:

Pos. Loop, Chandelle, Spin, Stall turn

In addition Category A:

Only with 18 m span without waterballast:

Half loop and half roll, half roll and half loop, slow roll, inverted flight, half positive flick roll from normal flight with half loop, half negative flick roll from inverted flight

Maximum mass:

Category A	630 kg	1389 lbs.
Category U	750 kg	1653 lbs.
Category U without waterballast	kg	lbs.

Loading chart

Cockpit load maximum or maximum minimum	front seat		rear seat		(Parachute included)
	kg	lbs.	kg	lbs.	
maximum	105 kg	231 lbs.	105 kg	231 lbs.	
or maximum	110 kg	242 lbs.	90 kg	198 lbs.	
minimum	kg	lbs.	/	/	

The load in the front and in the rear seat may be increased to max. 110 kg (242 lbs.) per seat. To accomplish this the mass of the rear pilot must be compensated by ballast in the ballast box in the fin.

With lower pilot weight necessary ballast must be added.

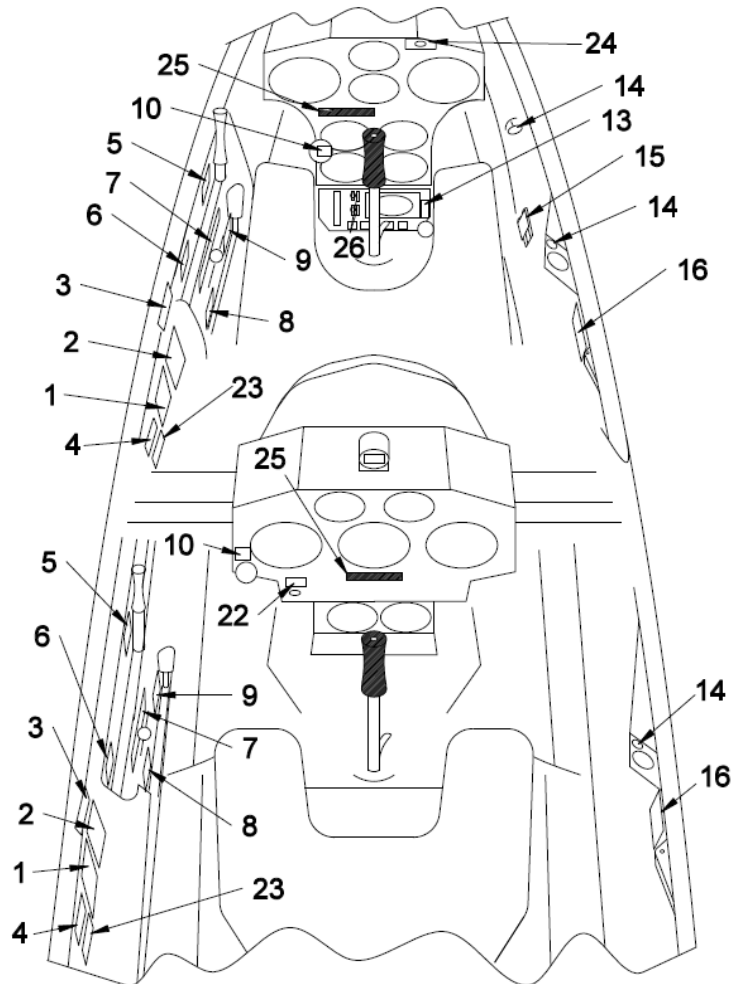
limits for use of the waterballast tank

minimum	°C	13.5	17	24	31	38
ground temperature	°F	56	63	75	88	100
maximum	m	1500	2000	3000	4000	5000
flight altitude	ft.	5000	6500	10000	13000	16500

Altitude in [m]	0-3000	4000	5000	6000	7000	8000
V _{NE} IAS km/h	270	256	243	230	217	205
Altitude in [ft]	0-10000	13000	16000	20000	23000	26000
V _{NE} IAS kts.	146	138	131	124	117	111

Cockpit Check

1. Lead ballast (for under weight pilot)?
2. Parachute worn property?
3. Safety harness buckled?
4. Front seat: pedals adjusted?
5. Rear seat: seating height adjusted?
6. All controls and knobs in reach?
7. Altimeter?
8. Dive brakes cycled and locked?
9. Positive control check ? (One person at the control surfaces).
10. Fin ballast tank emptied or correct amount filled in?
11. Trim?
12. Both canopies locked?
13. Runway free?



on
main
off

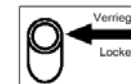
26

From 10-170 on and all ser. No.'s with electrically operated landing gear

intern
battery
fin

Senden
transmit

22

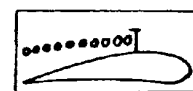


at cover plate of
fin ballast box

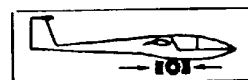
Ballast box in the fin
Min. load in the front seat



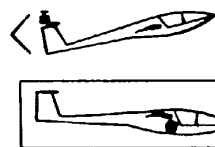
24



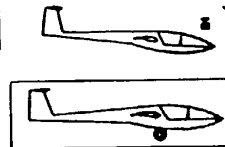
5



6



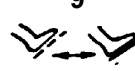
8



9



10



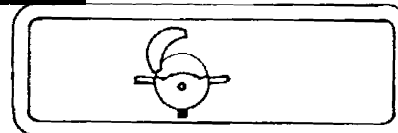
13



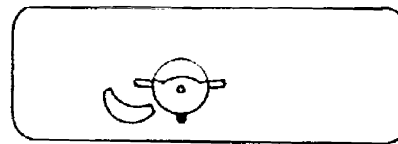
14



15



3



16

Bauteil Nr.:

part no. of
components at
all parts

Typ:	DG-1000S
W.Nr.	

fire proof placard at front
main bulkhead

Gepäck max. 15 kg
baggage max. 33 lbs.

at front main bulkhead

Reifendruck 2,5 bar
Tyre pressure 36 psi

at the right wheel door

Sollbruchstelle 10000 N
rated load 2200 lbs.

Reifendruck 2,5 bar
Tyre pressure 36 psi

right above the nose
wheel if applicable

Reifendruck 4 bar
Tyre pressure 58 psi

right above the tailwheel

Bemsflüssigkeit

min. brake fluid
DOT 3 / DOT 4

on brake fluid
reservoir

Warning:
Rigging of the horizontal
tailplane is only permitted with
nose down trim-setting!

at the upper left hand
side of the fin

diagram 11
issued May 2019
TN1000/41 rev. 1